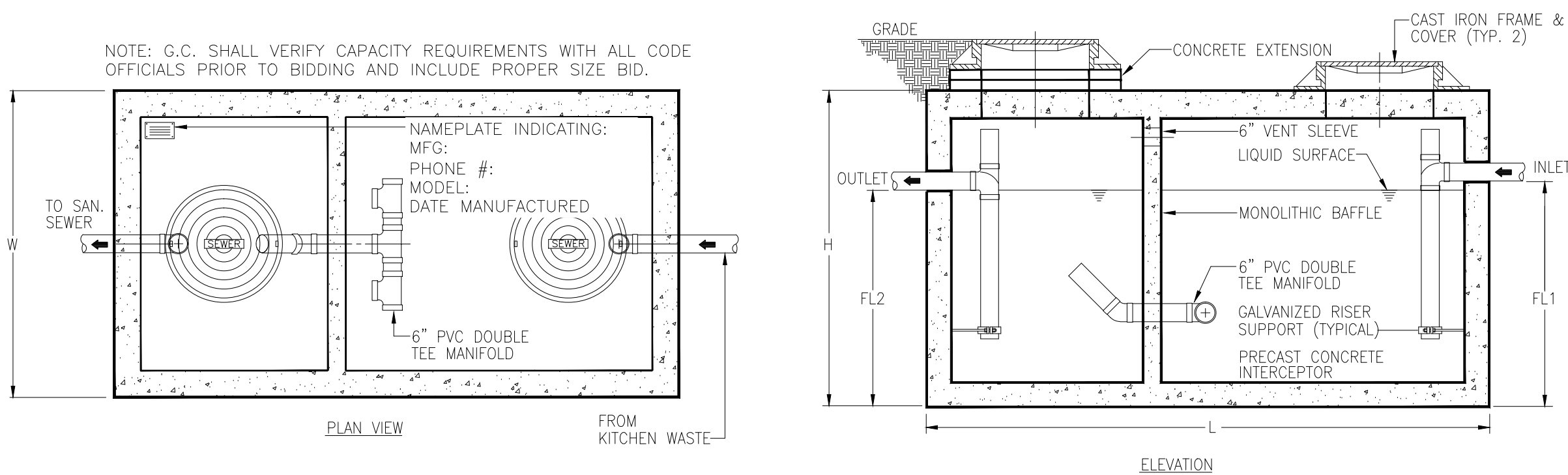


Circle K Southwest Prototype 1480 - 09/12/2013  
D  
C  
B  
A  
Drawing Name: P:\2013\201307001\480 Interim\Detail\021307001-P1-15.dwg User: J. Adams Date Modified: 09/19/2013 1:10pm by J. Adams

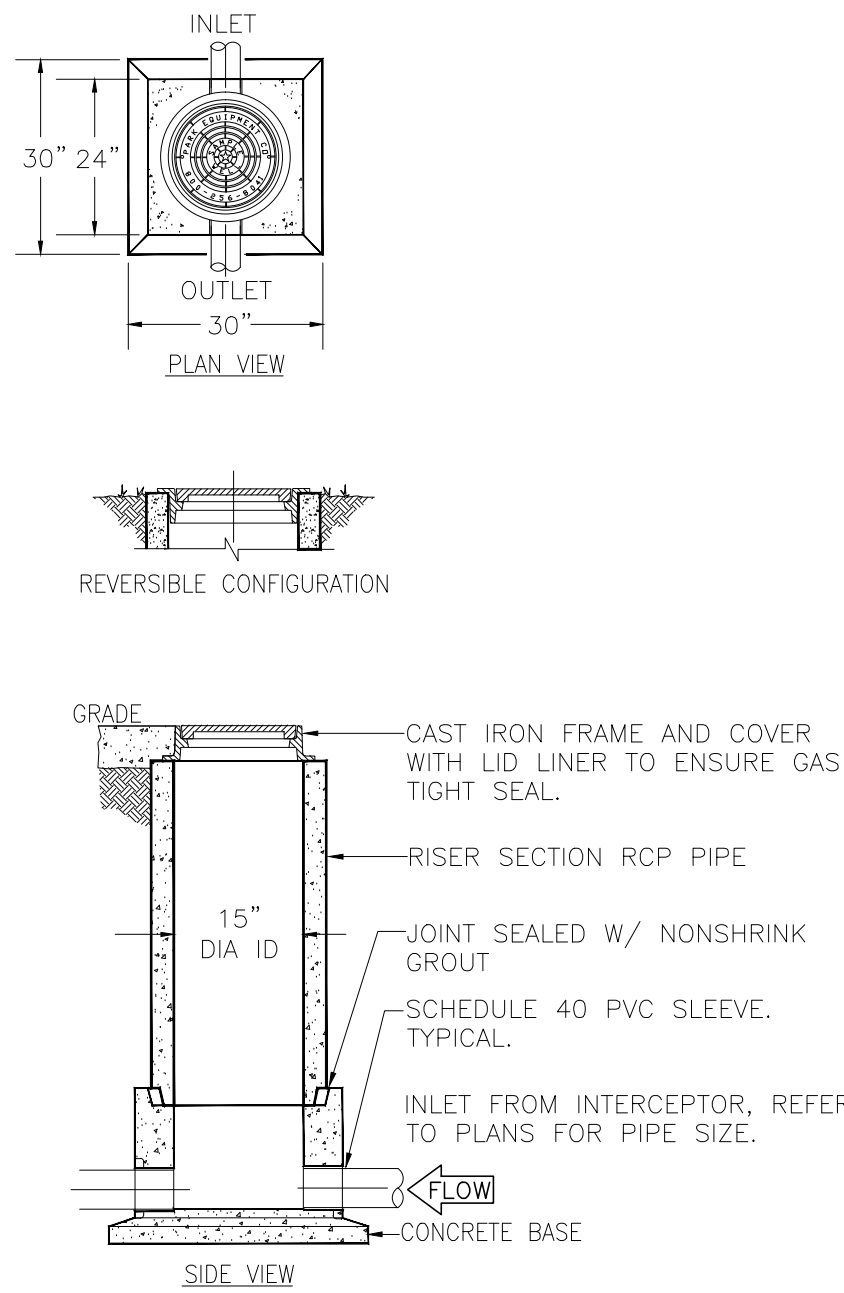
P7 NOT USED



| GREASE INTERCEPTOR SCHEDULE - OLD CASTLE MFG. |           |                 |                   |                |          |         |          |           |            |
|-----------------------------------------------|-----------|-----------------|-------------------|----------------|----------|---------|----------|-----------|------------|
| ITEM NO.                                      | MODEL NO. | CAPACITY US GAL | GREASE CAP. (LBS) | EMPTY WT (LBS) | LENGTH L | WIDTH W | HEIGHT H | INLET FL1 | OUTLET FL2 |
| GT-1                                          | 500 GL    | 500             | -                 | -              | 7'-10"   | 4'-4"   | 4'-6"    | 3'-3"     | 3'-0"      |

- NOTE:
1. PRECAST CONCRETE GREASE TRAP SIZE, SHAPE AND DIMENSION MAY VARY FROM DETAIL, BUT SHALL BE IN ALL CASES PER LOCAL CODE REQUIREMENTS.
  2. GREASE TRAP TO BE TRAFFIC RATED D.

P8 500 GALLON CAPACITY GREASE TRAP DETAIL

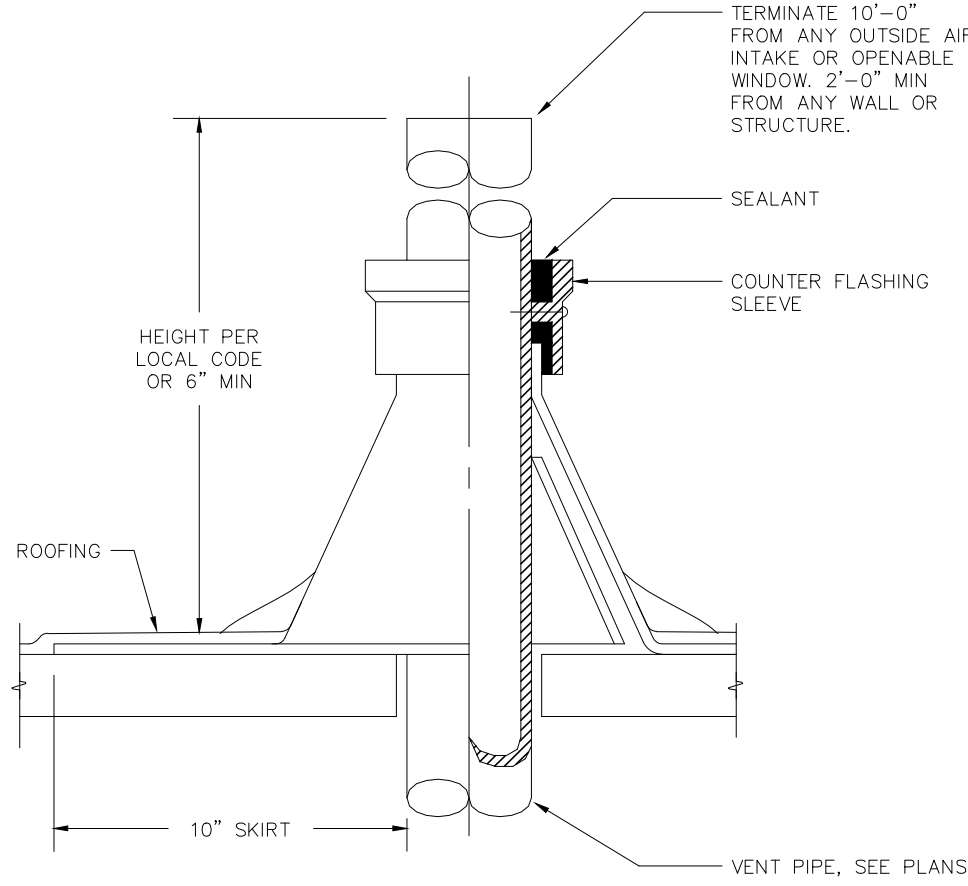


| MANUFACTURER/ MODEL   |
|-----------------------|
| PARK EQUIPMENT SWB-15 |

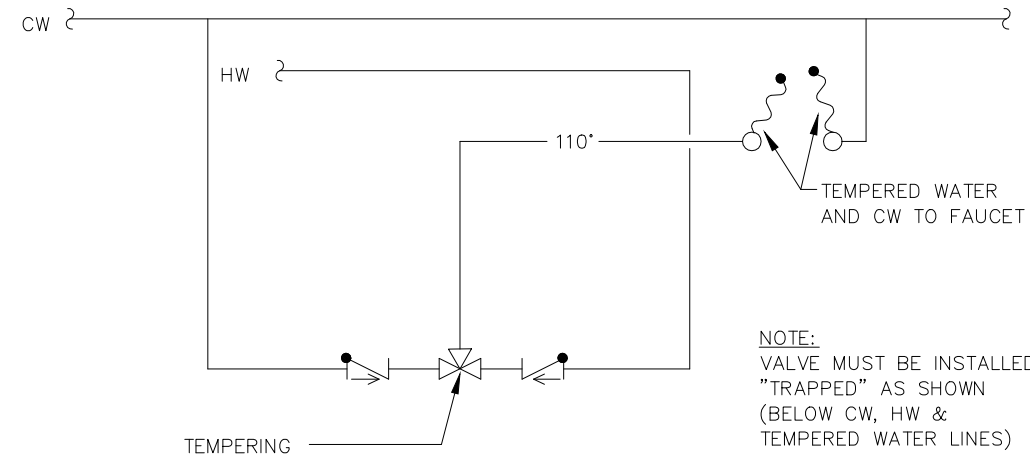
- NOTES AND SPECIFICATIONS:
- USE 15" T&G R.C.P. FOR 6'-0" DEEP AND LESS.
- USE 24" T&G R.C.P. FOR INSTALLATION GREATER THAN 6'-0" DEEP. (STANDARD RING AND M.H. COVER REQUIRED)
- SAMPLING WELL MUST BE SET IN A CIRCULAR OR SQUARE CONCRETE PAD (1'-0" GREATER THAN OUTSIDE DIAMETER OF PIPE.)
- LAWN INSTALLATION MUST BE 4" ABOVE FINISHED.
- DRIVE & SIDEWALK INSTALLATION MUST BE BROUGHT TO FINISHED GRADE.
- CONCRETE SHALL BE CLASS 1 WITH A DESIGN STRENGTH OF 4500 PSI AT 28 DAYS. UNIT SHALL BE OF MONOLITHIC CONSTRUCTION AT FLOOR AND FIRST STAGE OF WALL WITH SECTIONAL RISER TO REQUIRED DEPTH.
- CAST IRON FRAMES AND GRATES SHALL BE MANUFACTURED OF GREY CAST IRON CONFORMING TO ASTM A48-76 CLASS 30, HEAVY DUTY AASHTO H-20.

P9 SAMPLE WELL ISW-1

P4 VENT THRU ROOF

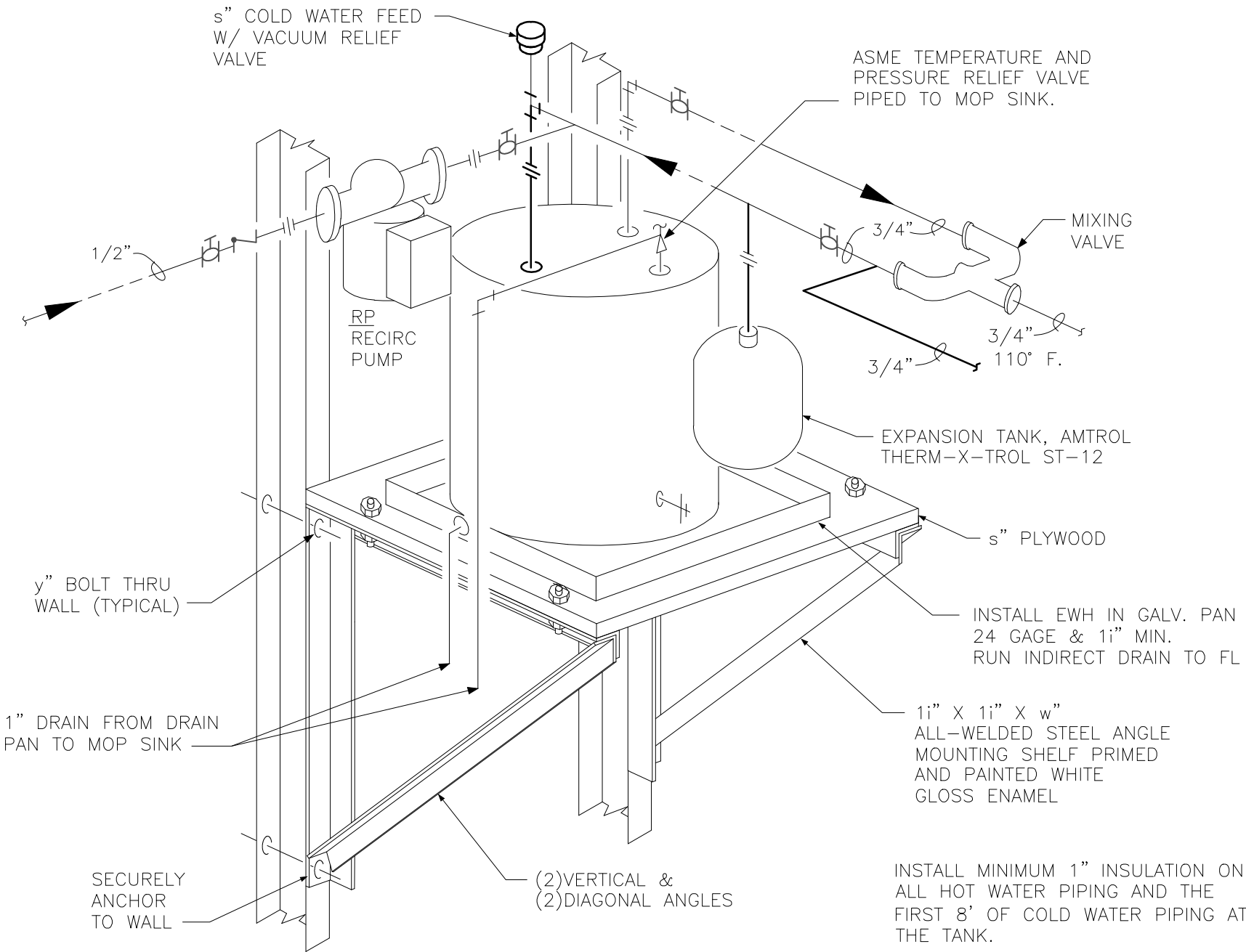


P4 VENT THRU ROOF



| PIPE INSULATION SCHEDULE |           |                  |              |
|--------------------------|-----------|------------------|--------------|
| FLUID TEMP.              | PIPE SIZE | INSUL. THICKNESS | INSUL. VALUE |
| 105F-200F                | 1" & LESS | 1.0"             | R= 4.0       |
| 105F-200F                | 1 1/4"-2" | 1.5"             | R= 4.0       |
| 105F-200F                | 2 1/2"-4" | 2.0"             | R= 4.0       |

P5 TEMPERING VALVE DETAIL

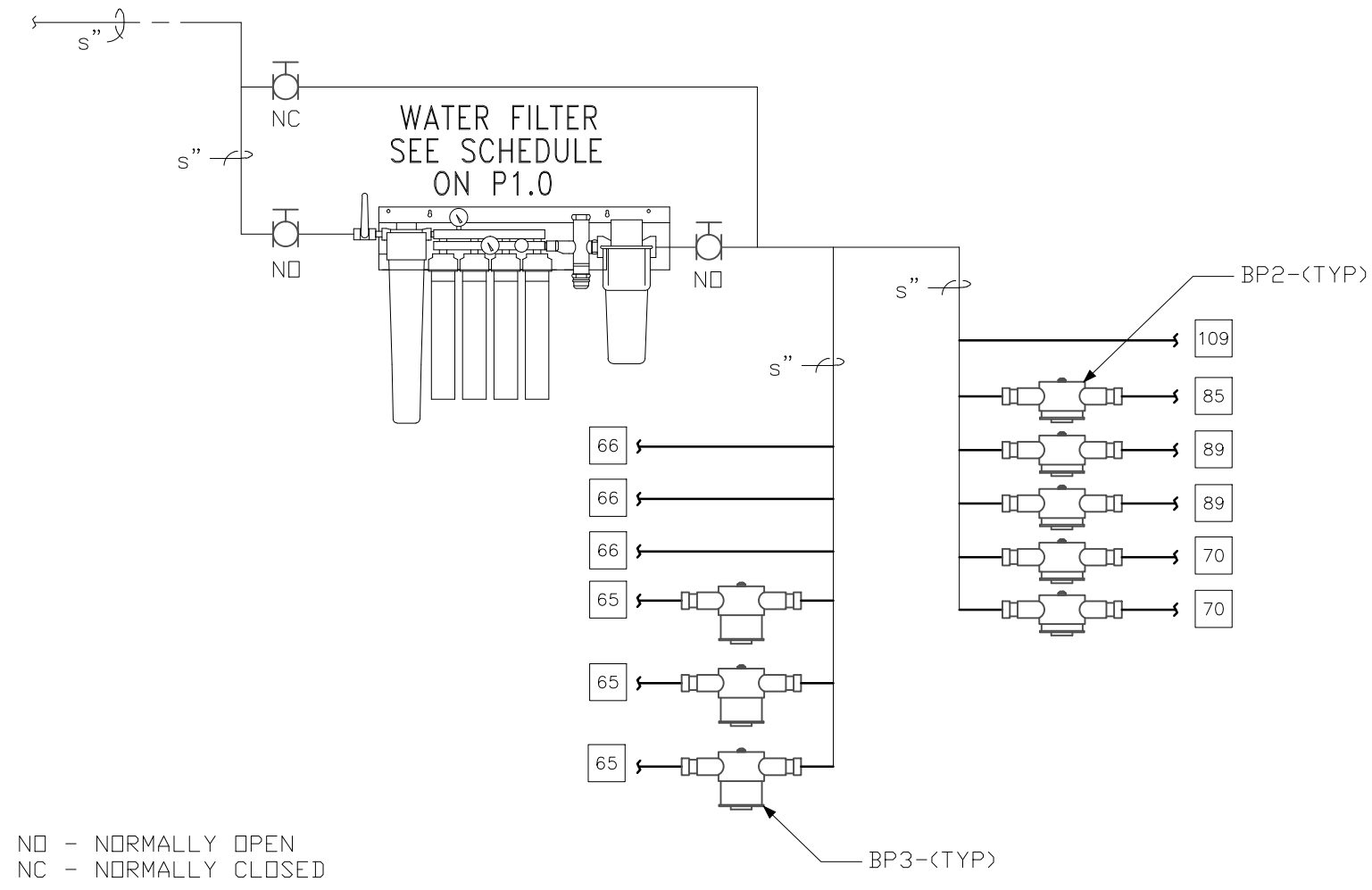


P6 WALL MOUNTED ELECTRIC WATER HEATER

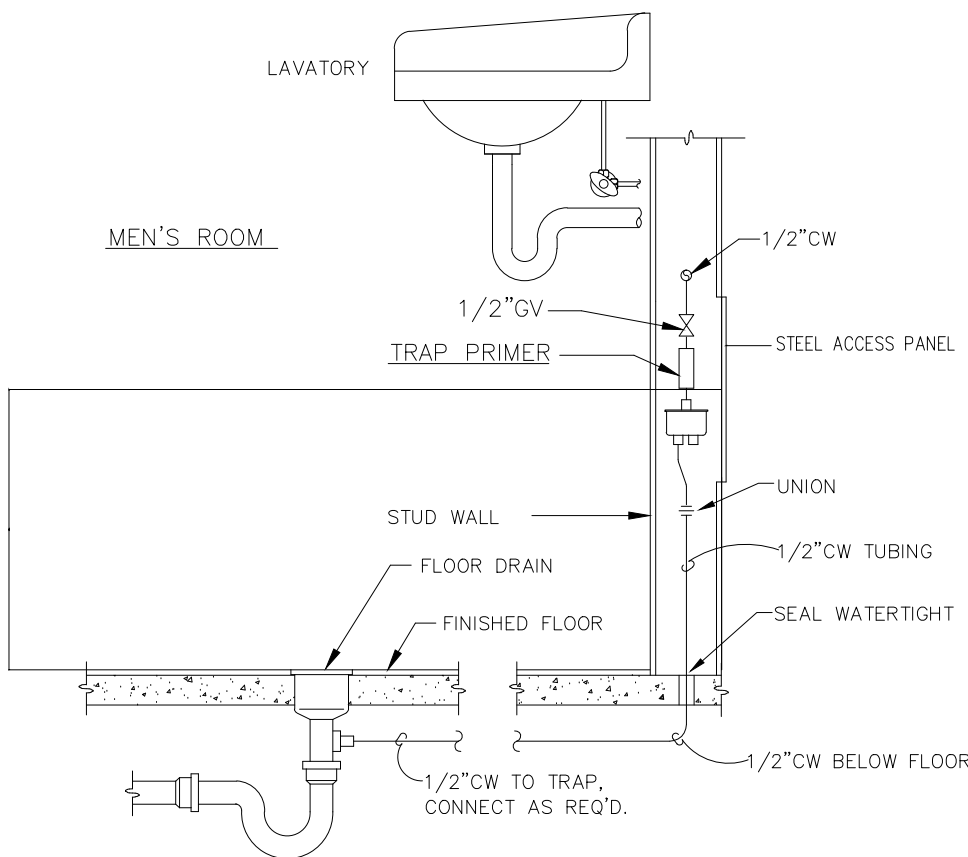
P1 NOT USED

FOR BID ONLY

P2 EVERPURE WATER FILTER SYSTEM



P3 TRAP PRIMER DOOR



GreenbergFarrow

**COPYRIGHT NOTICE**  
This drawing is the property of the above referenced Professional and is not to be used for any purpose other than the specific project and site named herein, and cannot be reproduced in any manner without the express written permission from the Professional.

| ISSUE/REVISION RECORD |             |
|-----------------------|-------------|
| DATE                  | DESCRIPTION |
| 01/19/15              | PERMIT SET  |

PROFESSIONAL SEAL

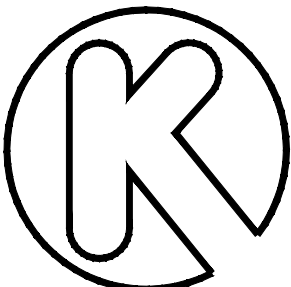


Signed: 01/19/15  
**PROFESSIONAL IN CHARGE**  
ERIC WOLF  
**PROJECT MANAGER**  
ALEX ADAIR  
**QUALITY CONTROL**  
DARCY HASBERRY  
**DRAWN BY**  
ALEX ADAIR

**PROJECT NAME**  
**CIRCLE K STORES, INC.**

**COLORADO SPRINGS COLORADO**

**E. FOUNTAIN BLVD & ACADEMY PARK LOOP**



CIRCLE K STORES INC.

**PROJECT NUMBER**  
20130780

**SHEET TITLE**  
DETAILS

**SHEET NUMBER**

**P1.1-CS**