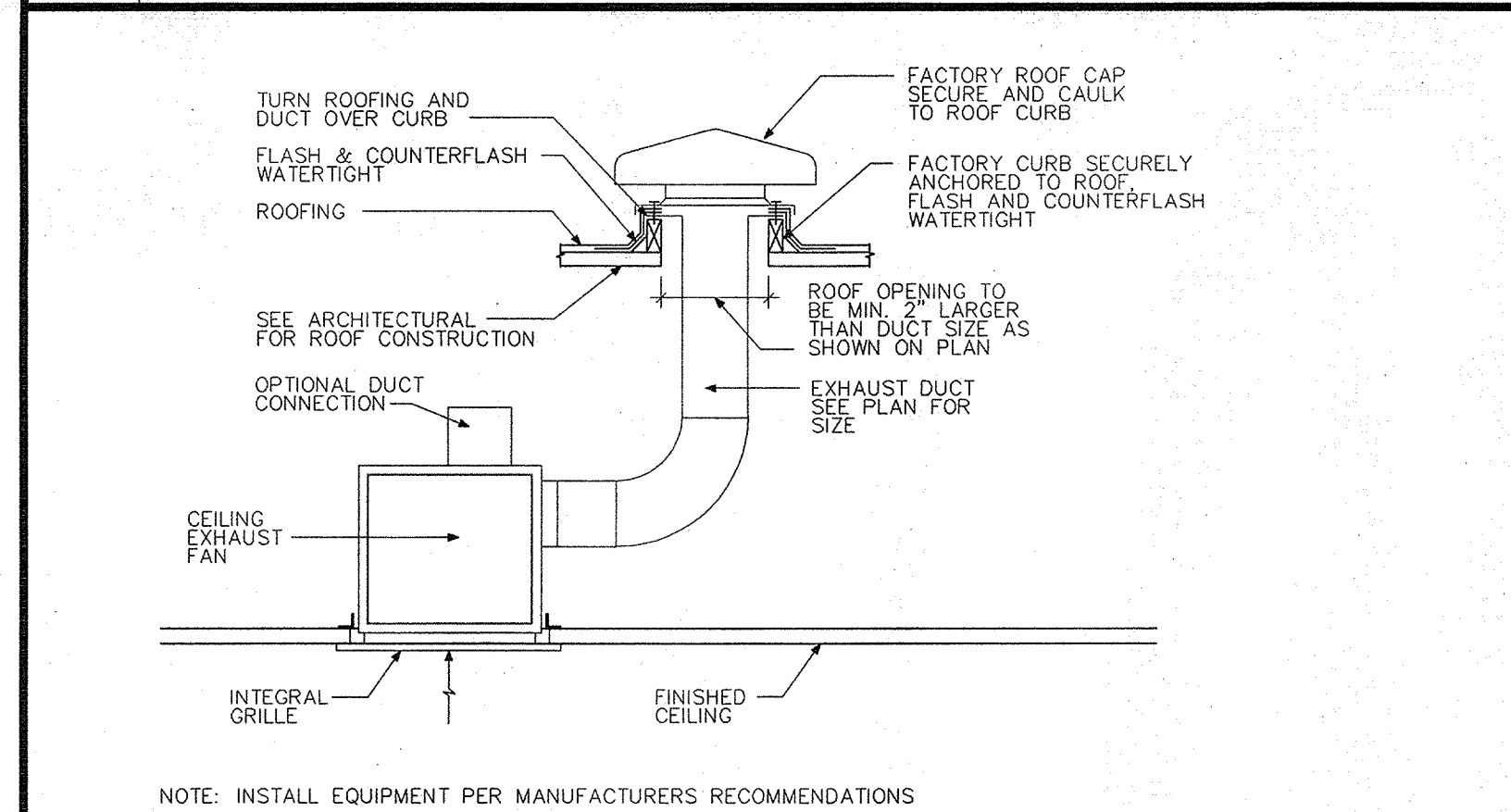
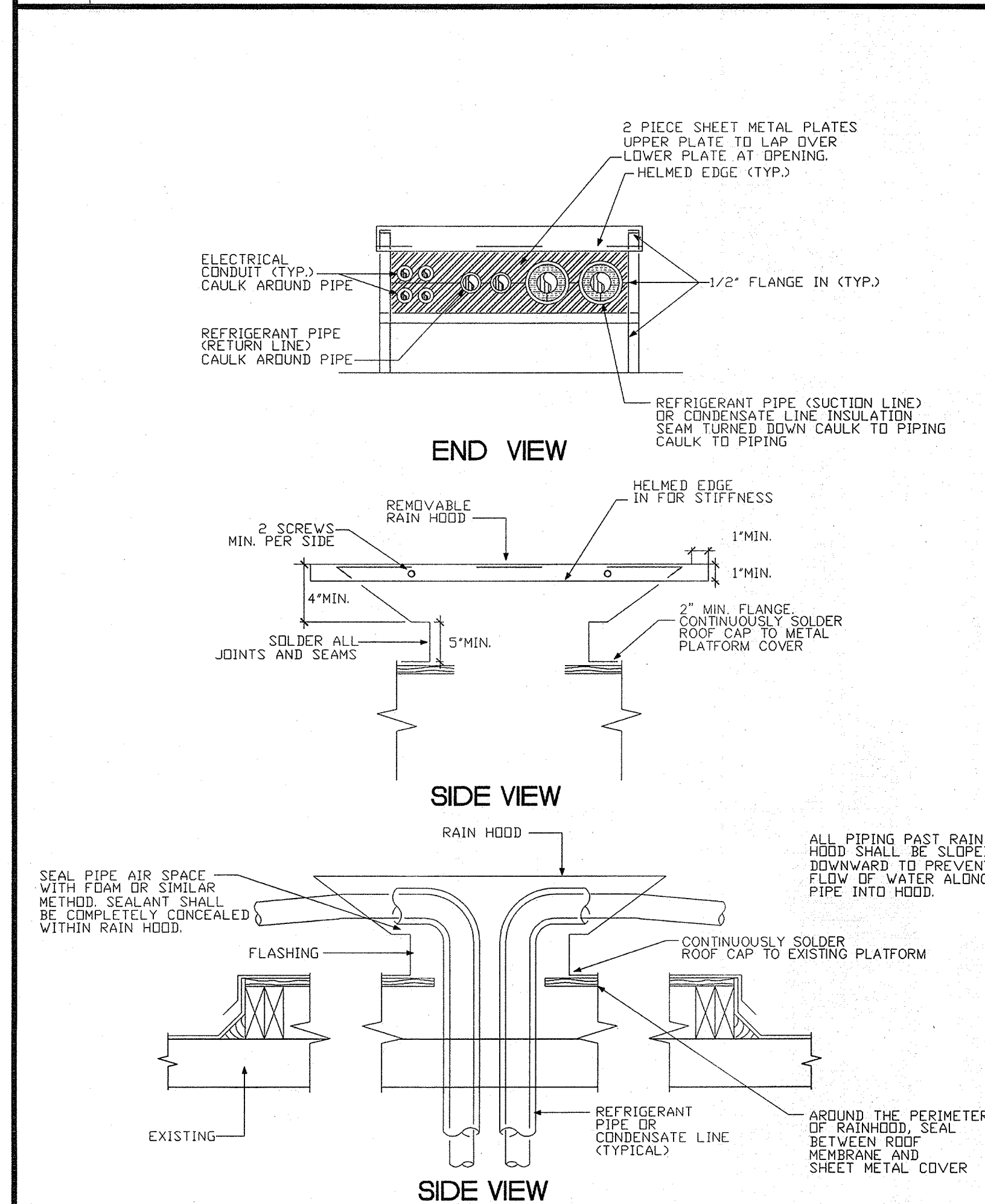


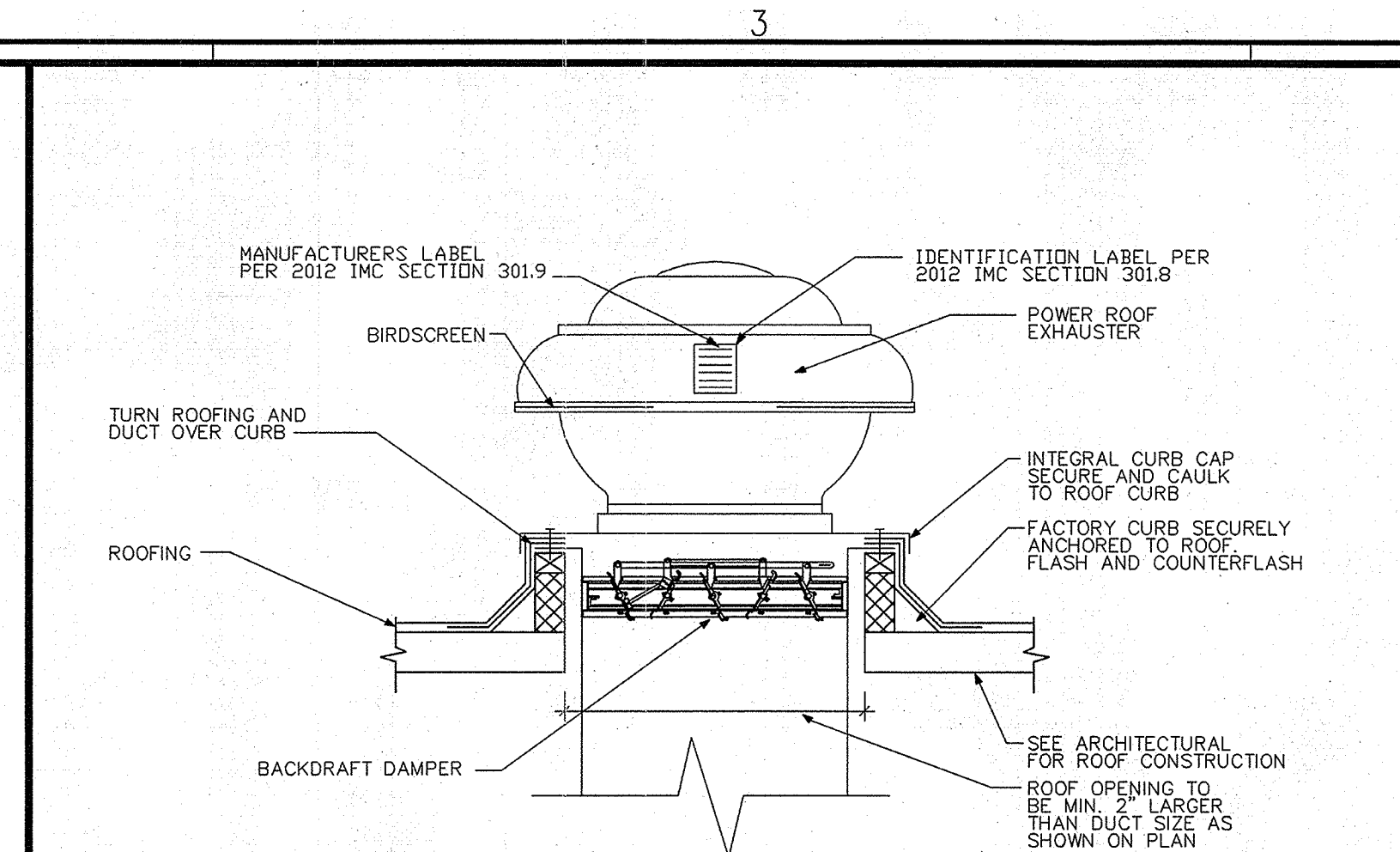
A9	DUCT SUPPORT
----	--------------



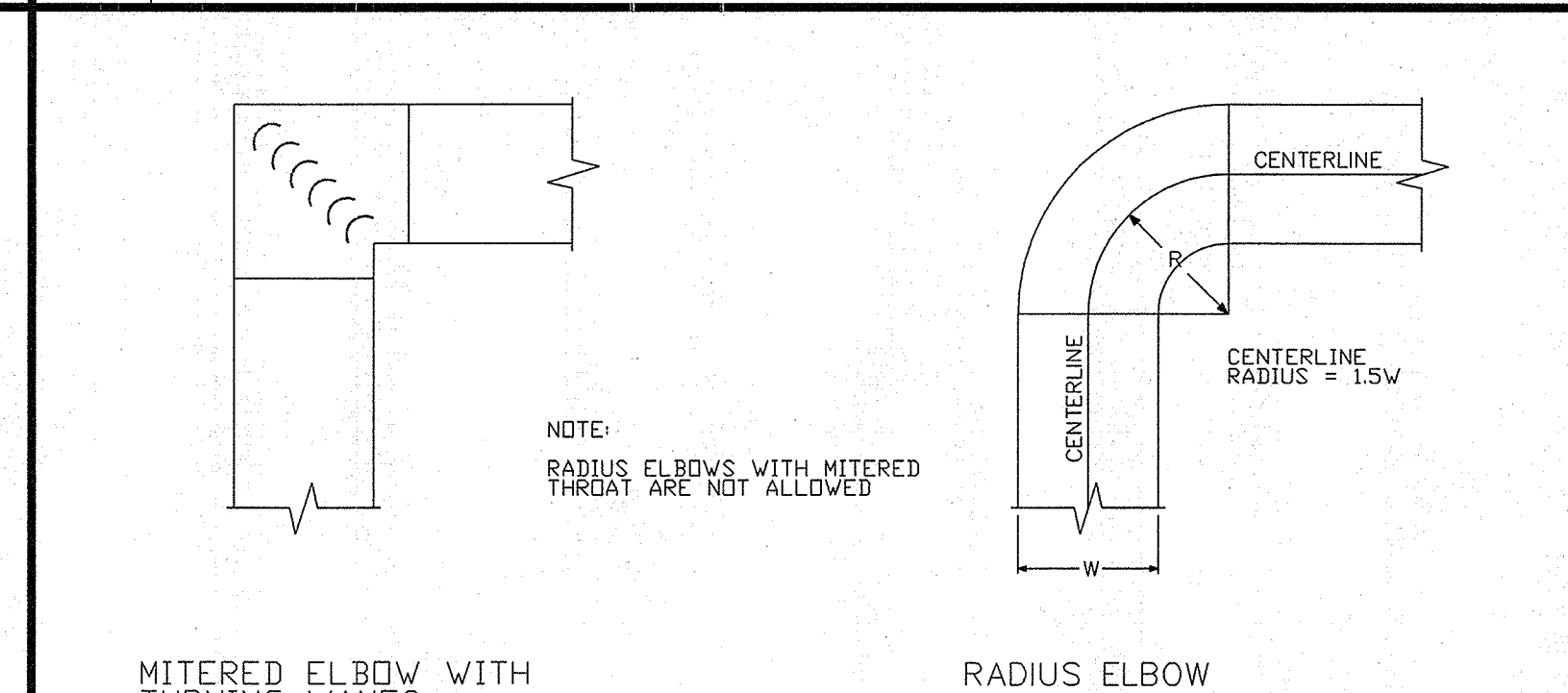
A10	CEILING EXHAUST FAN DETAIL
-----	----------------------------



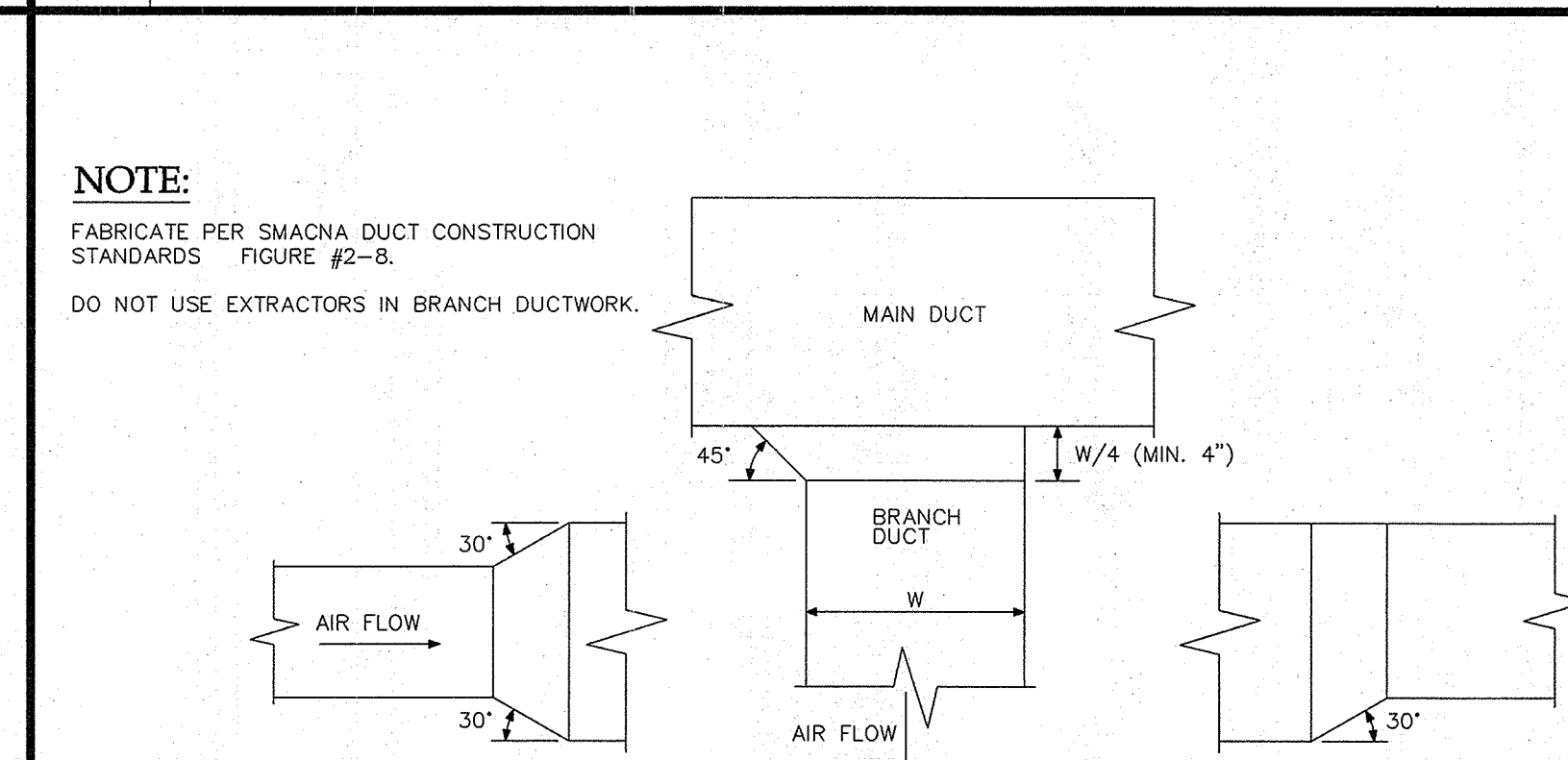
A11	PIPING RAIN HOOD DETAIL
-----	-------------------------



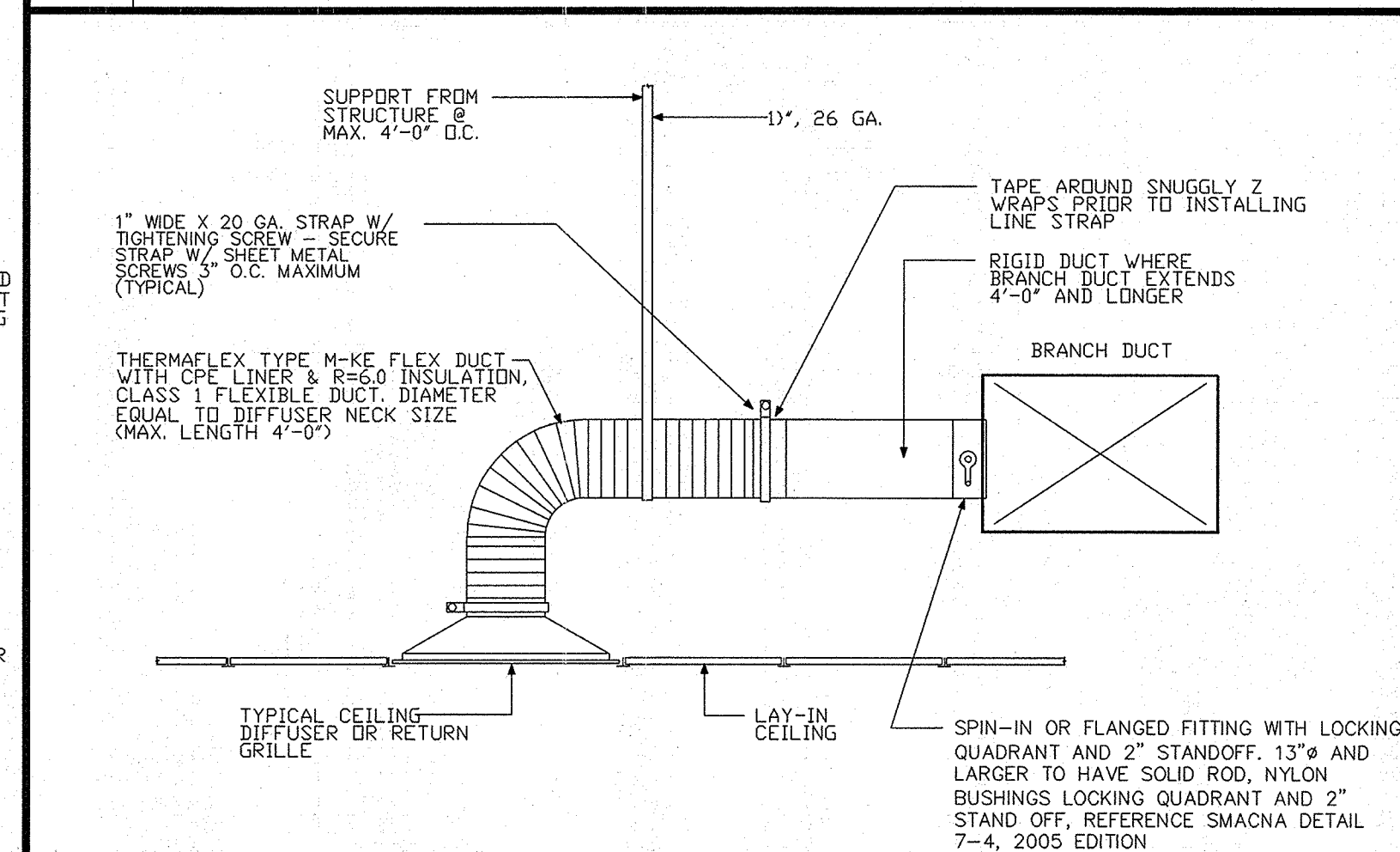
A5 POWER ROOF EXHAUSTER DETAIL



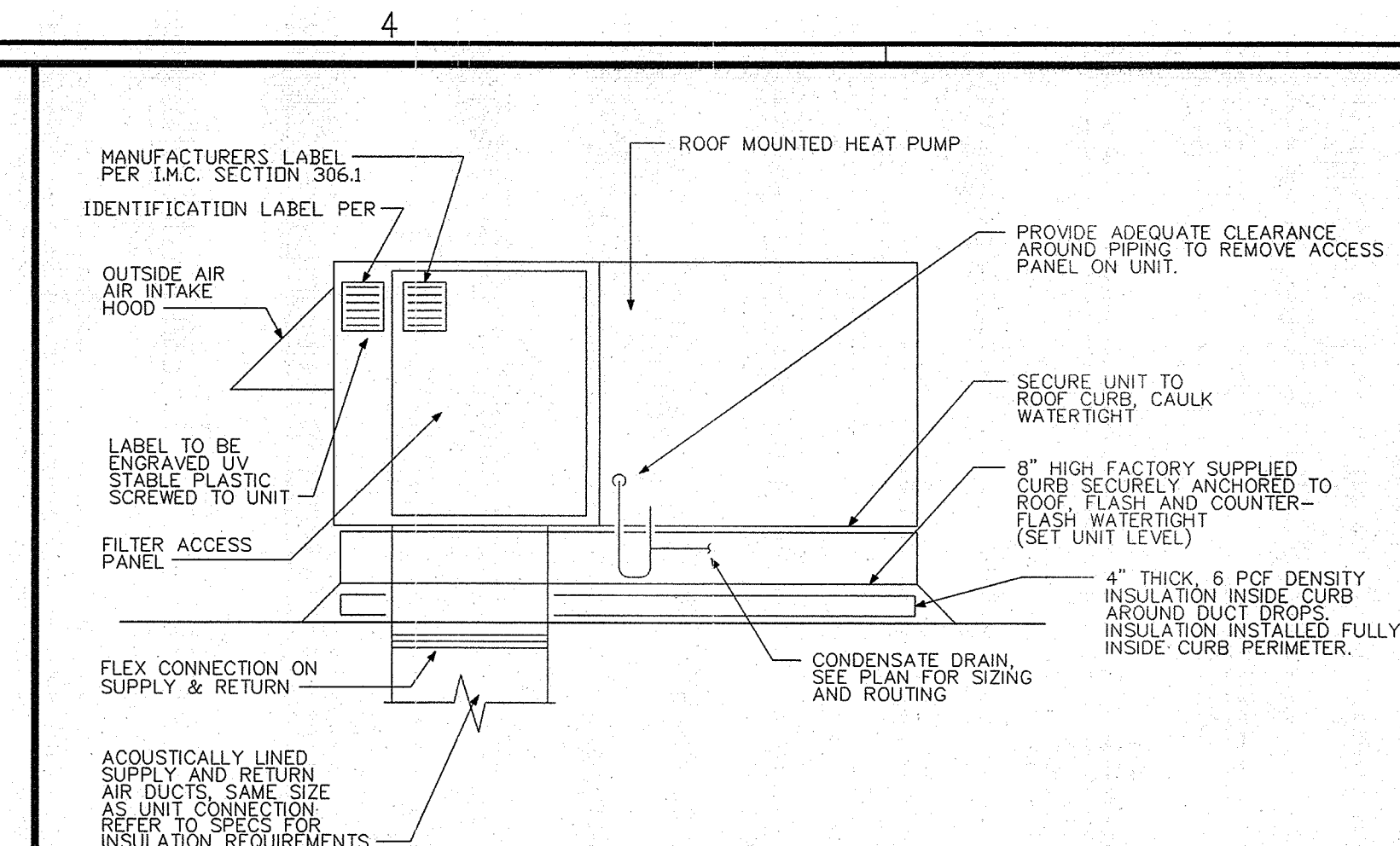
A6	DUCT ELBOW DETAILS
----	--------------------



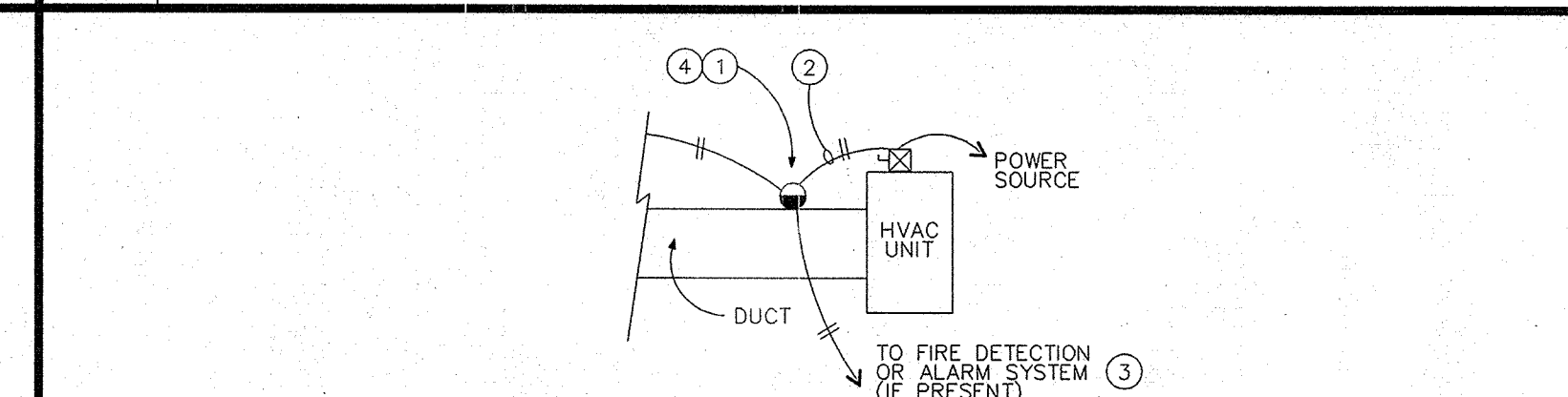
A7	DUCT CONNECTION
----	-----------------



A8	DIFFUSER/GRILLE CONNECTION DETAIL
----	-----------------------------------



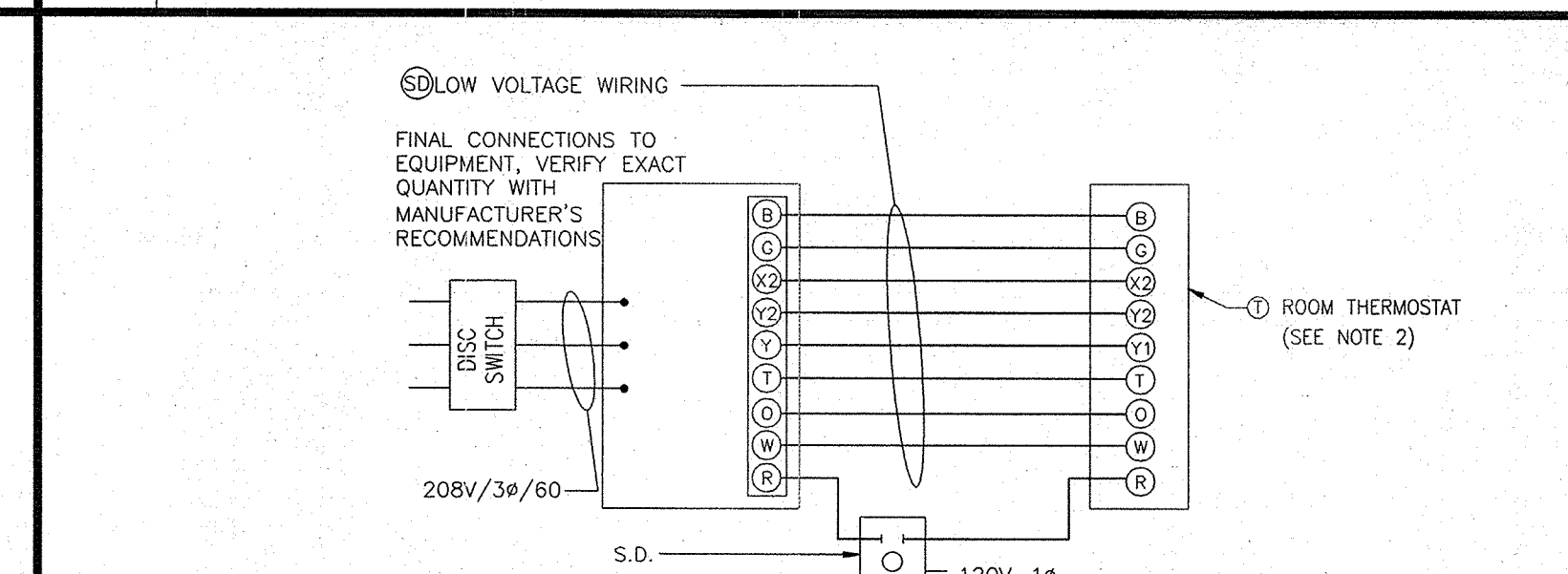
A1	ROOF-TOP PACKAGE UNIT DETAIL
----	------------------------------



NOTES:

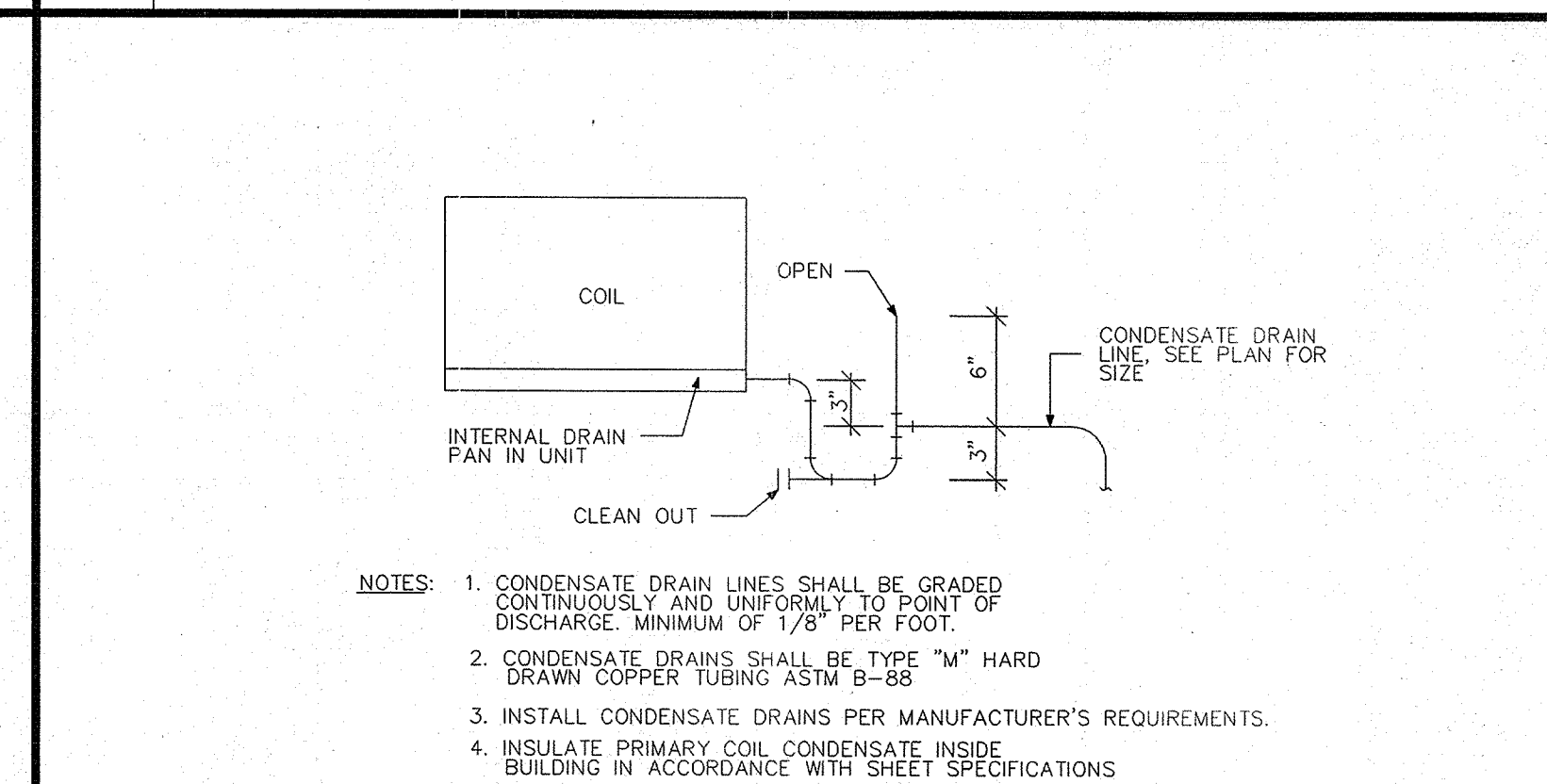
- ① "LOW FLOW" TYPE DUCT SMOKE DETECTOR MOUNTED ON THE RETURN AIR DUCT WHERE SHOWN, FURNISHED, INSTALLED, AND CONTROL WIRING BY MECHANICAL CONTRACTOR. POWER WIRING BY ELECTRICAL/FIRE ALARM CONTRACTOR. SEE PLANS FOR ALL LOCATIONS. PROVIDE REMOTE VISIBLE AND AN AUDIO SIGNAL ALONG WITH LOW BELOW CELING AS REQUIRED PER 2012 M.C. SECTION 606.4.1 AND NFPA.
 - ② MECHANICAL CONTRACTOR SHALL FURNISH, INSTALL, AND PROVIDE WIRING TO HVAC UNIT TO SHUT DOWN UNIT UPON DETECTION OF SMOKE. MECHANICAL CONTRACTOR SHALL PROVIDE ALL NECESSARY RELAYS, CONTACTORS, POWER MODULES, ETC. AS NECESSARY TO PROVIDE A COMPLETE OPERATIONAL SYSTEM. COORDINATE WITH ELECTRICAL/FIRE ALARM CONTRACTOR TO VERIFY VOLTAGE REQUIREMENTS, LOCATIONS, ETC.
 - ③ ELECTRICAL/FIRE ALARM CONTRACTOR SHALL PROVIDE WIRING IF FIRE DETECTION OR ALARM SYSTEMS ARE PROVIDED FOR THE BUILDING, THE SMOKE DETECTORS SHALL BE SUPERVISED BY SUCH SYSTEMS.
- SMOKE DETECTORS REQUIRED BY 2012 M.C. SECTION 606.3.1 SHALL BE INSTALLED IN ACCORDANCE WITH NFPA 72. DUCT SMOKE DETECTORS REQUIRE A REMOTE LED INDICATOR THRU THE CEILING LEVEL. NFPA 721-3.8.3. DUCT SMOKE DETECTORS SHALL ACTIVATE A VISIBLE AND AUDIO SIGNAL AT A NORMALLY OCCUPIED LOCATION AND SHALL BE MONITORED BY THE FACT AND REPORT AS A SUPERVISORY SIGNAL PER NFPA 72 AND THE I.M.C. DUCT SMOKE DETECTORS TO PROVIDE SHUTDOWN IN 30 SECONDS OR LESS.

A2 DUCT SMOKE DETECTOR CONNECTION DETAIL



- WIRING DIAGRAM NOTES
1. DUCT SMOKE DETECTOR WILL BE FURNISHED AND WIRED INSIDE SUPPLY DUCT. INTERLOCK WIRING WILL BE PROVIDED BY CONTRACTOR.
 2. INSTALL ROOM THERMOSTAT CARRIER "DEBONAIR" MODEL 33C250-FS W/COVER 5-1-1 PROGRAMMABLE & HOLIDAYS , 4-HOUR OVERRIDE, OR EQUAL BY HONEYWELL COMPLETE WITH MOUNTING BASE AND KEYS. FIELD INSTALL JUMPER TO FAN SWITCH TERMINALS TO DISABLE THE "FAN AUTO" FUNCTION (FAN WILL RUN CONTINUOUSLY WHENEVER THE SYSTEM SWITCH IS IN THE "ON" POSITION). MOUNT THERMOSTAT AT +4'-0" A.F.F.

A3	TYPICAL A/C WIRING DIAGRAM
----	----------------------------



A4	CONDENSATE DRAIN TRAP DETAIL
----	------------------------------