

D  
C  
B  
A

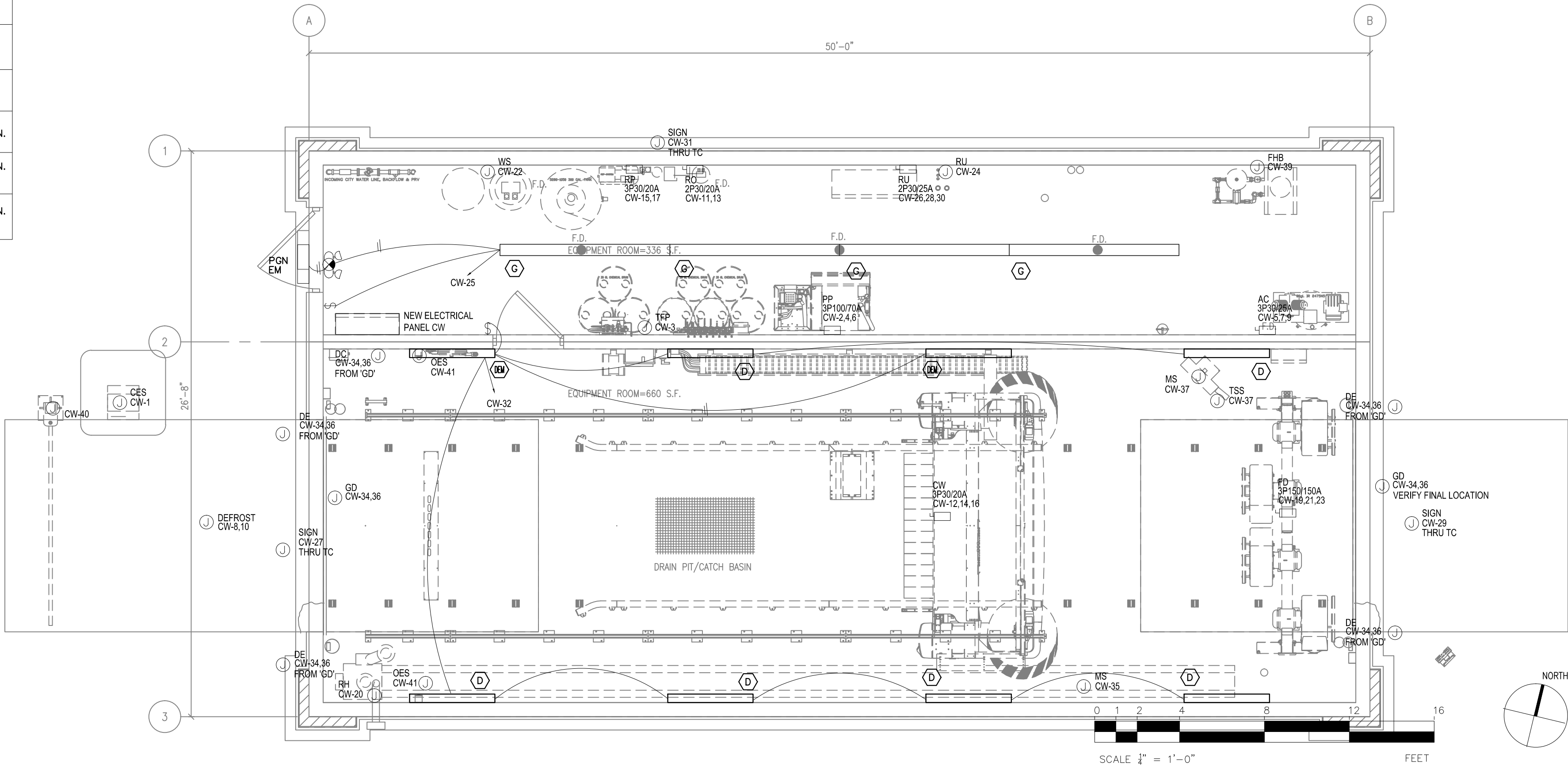
CIRCLE K SOUTHWEST PROTOTYPE 4480 - REV 1/2013

Drawing Name: P:\2013\20130700\200 Electrical Construction Documents - E2.0-0-CW\20130408\_E2.0-CW.dwg Last Modified: Jan 20, 2013 - 2:14pm Created by: gshaw

LIGHTING FIXTURE SCHEDULE						
TYPE	MANUFACTURER CATALOG NO.	LAMP QTY. & TYPE	FIXTURE WATTAGE	VOLTS	DESCRIPTION	REMARKS
⬡	LSI LIGHTING # S-1-17-MVOLT-GEB10IS	(2) F32T8	65	120	8" SURFACE MOUNTED STRIP FLUORESCENT FIXTURE WITH ELECTRONIC BALLAST	
⬢	LSI LIGHTING # EG3-2-N-32-SS010-WL-UE	32-32WT8	64	120	SURFACE MOUNTED TUNNEL FIXTURES WATERPROOF	WATERPROOF
⬢	LSI LIGHTING # EG3-2-N-32-SS010-WL-UE-EM	32-32WT8	64	120	SURFACE MOUNTED TUNNEL FIXTURES WATERPROOF WITH EM BATTERY PACK	WATERPROOF 1200 LUMENS MIN. 90 MINUTES
PGN EM	DUAL LITE PGNZ	4-LED	12	120	EXTERIOR BUILDING WALL MOUNTED SOURCE EMERGENCY FIXTURE WIRE VIA INVERTER SYSTEM	1200 LUMENS MIN. 90 MINUTES
⬢	DUAL LITE LZ20NI	WITH FIXTURE		120	EMERGENCY FIXTURE/EXIT SIGN COMBO (2) HEAD	1200 LUMENS MIN. 90 MINUTES

EQUIPMENT LEGEND	
AC	AIR COMPRESSOR
CB	CLEARANCE BAR
CES	CODED ENTRY SYSTEM
CP	CHEMICAL PUMPING PANEL
CP0	CP0 CONTROLLER
CW	CHOICEWASH XT GANTRY
DR	DRYER CONTROL BOX
DT	DRYER TIMER
EC	ENERGY CHAIN FEED SYSTEM
EP	ELECTRICAL PANEL (BY OTHERS)
FD	FS-40D FREESTANDING DRYER
FHB	FLOOR HEAT BOILER SYSTEM
GD	GARAGE DOORS
GR	GUIDE RAILS
GRE	GUIDE RAIL EXTENSIONS
HS	HEAT SHIELD

JB	IN-BAY JUNCTION BOX
MD	MAIN DISCONNECT
MS	MERCHANDISING SIGN-OFF BOARD
PP	CHOICEWASH XT PUMPING PLANT
RH	RADIANT HEATER
RM	REFLECTIVE MARKERS
RO	R/O UNIT
RP	REPRESSURE-PUMP-FINAL RINSE
RU	RECLAIM UNIT
SF	SPOT FREE STORAGE TANK
TFP	TRI-FOAM PUMPING PLANT
TK	GANTRY TRACK 32"
TR	TREADLE SENSOR PAD
UC	UNDERCARRIAGE WASH MANIFOLD
UCP	UCP PHOTO EYE SENSORS
WBH	WASH BAY HOSE
WS	WATER SOFTENER



E2.1 ELECTRICAL PLAN

1/4"=1'-0"

SYMBOL	PART NUMBER	DESCRIPTION	POWER REQ. 110 VAC 1PH	POWER REQ. 208-230VAC 1PH OR 3PH	CONTROL WIRING CONDUCTOR	INLET CONNECTION	OUTLET CONNECTION	WATER USAGE GPM	AIR CFM 90 PSI MIN
AC	3950-1900	AIR COMPRESSOR, 5 HP 90 GALLON TANK		16.7A @ 208/230VAC 3PH			3/4" NPT		
CB	3950-3903	TSS RETRACTABLE CLEARANCE BAR							
CES		WASH SELECT II, CODED ENTRY UNIT	8A @ 120VAC		24 VAC, 18 G, 12 COND				
CP	7040-0042	CHEMICAL PUMPING PANEL	(SUPPLIED WITH GANTRY)		24 VAC, 18 G, 12 COND				
CP0	7040-4161	CP0 CONTROLLER	(SUPPLIED WITH GANTRY)		FACTORY INSTALLED				
CW		CHOICEWASH XT WITH NO DRYER		20A @ 208/230VAC 3PH					
DR	7030-4142	DRYER CONTROL BOX-FS40/FS40D	(SUPPLIED WITH FS)						
DT		DRYER TIMER, SHROUD 6 4" TALL 9" WIDE			24 VAC, 18 G, 3 COND				
EC	7040-6145 9150-0241 9150-0251	ENERGEY CHAIN FEED SYSTEM-OPEN							
EP		ELECTRICAL PANEL (NOT SUPPLIED BY MARK VII)							
FD	7030-7086	FS-40D HP FREESTANDING DRYER WITH SIDE DOWN CHUTES		125A @ 208/230VAC 3PH					
FHB		FLOOR HEAT BOILER SYSTEM (100K BTU, 10 X 10 & 10 X 15 MATS)		SEE MFG SPECS					
GD		BAYWATCH INTELLIMATCH PREMIUM DOOR SYSTEM		20A @ 208/230VAC 3PH	24VAC 18G, 4 COND				
GR	9150-0286	10'-0" GUIDE RAILS, SST LOW PROFILE							
GRE	W6150-0065	10'-0" GUIDE RAIL EXTENSIONS, SST LOW PROFILE							
HS	9150-0304	HEAT SHIELDS (PROTECTS UNIT FROM OVERHEAD RADIANT HEATERS)							
JB	7040-4010	IN BAY JUNCTION BOX	(SUPPLIED WITH GANTRY)						
MD	0005-1506	MAIN DISCONNECT	(SUPPLIED WITH GANTRY)						
MS	3950-3034 3950-3036 7050-4000	MERCHANDISING SIGN - OFF BOARD WITH INTERFACE ENCLOSURE		15A @ 120 VAC	24 VAC, 18 G, 8 COND				

SYMBOL	PART NUMBER	DESCRIPTION	POWER REQ. 110 VAC 1PH	POWER REQ. 208-230VAC 1PH OR 3PH	CONTROL WIRING CONDUCTOR	INLET CONNECTION	OUTLET CONNECTION	WATER USAGE GPM	AIR CFM 90 PSI MIN
PP	7040-7000	CHOICEWASH XT PUMPING PLANT STATION-20 HP		62.1A @ 208/230VAC 3PH	24 VAC, 18 G, 21 COND			28 (1)	1.5
RH		IN BAY HEATING 40' STRAIGHT, 125,000 BTU	1.2A @ 120VAC			3/4" GAS			
RM	3950-3953 3950-3954	YELLOW REFLECTIVE MARKERS WITH ADHESIVE							
RO	3950-1789	REVERSE OSMOSIS UNIT - PURICLEAN PC 3000 GPD WALL MOUNT		20A @ 220VAC, 1PH 1/2-20 RECEPT		2X 1" WATER LINE W/ PPT			
RP	3950-1775	HIGH PRESSURE (150PSI MAX), REPRESSURIZATION PUMP UPGRADE		20A @ 220VAC, 1PH 1/2-20 RECEPT				19	
RU	3950-4071	RECLAIM UNIT- PURWATER 60 GPM PV2000MB		20A @ 208/230VAC 3PH					
SF	5200-1000 9150-0045	SPOTFREE STORAGE TANK, 300 GALL, 34 9/16" DIA X 62" TALL WITH SHIPPING KIT				2" MPT			
TFP	7030-2062	TRI-FOAM PUMPING PLANT	3.2A @ 110VAC		24 VAC 18 G, 2 COND			5	6
TK	9150-0296	TRACK-GANTRY-32" LOW PROFILE							
TR	9150-0355	TREADLE SENSOR PAD LOW PROFILE			24 VAC 18 G, 2 COND				
TSS	TFL45	TSS SHINETECS SIGN-4"	5A @ 110VAC			3/4" NPT			
UC	6530-0060	UNDERCARRIAGE WASH MANIFOLD w/FLAT COVER				3/4" NPT		17 (1)	
UCP	9150-0386	UNDERCARRIAGE PHOTO EYE-SENSORS RECEIVER & TRANSMITTER, CABLES & ENCLOSURES			24 VAC 18 G, 5 COND				
WBH		WASH BAY HOSE							
WS	5200-4000	WATER SOFTENER W/BRINE TANK, RS1518 SINGLE		20A @ 110VAC		1 1/2" NPT/1 3/4" DRAIN			

MANUALS AND DOCUMENTATION	
6360-0064	SOFTWASH XT PARTS LIST
6370-0015	SOFTWASH XT CP0 TECHNICAL MANUAL
6370-0064	SOFTWASH XT OPERATION/INSTALLATION MANUAL
0000-0106	SOFTWASH XT ELECTRICAL SCHEMATIC
6370-0025	AQUADRI FS-30-40/50-60 DRYER INSTALLATION MANUAL
0000-0134	AQUADRI FS-40-60D DRYER ELECTRICAL SCHEMATIC

Short Circuit Current Rating (SCCR):  
Standard equipment carries an SCCR rating = 10,000 Symmetrical Amperes  
Other ratings available only by special order

(1) PUMPING PLANT AND UNDERCARRIAGE DO NOT OPERATE AT SAME TIME.

FOR BID ONLY

E2.2 EQUIPMENT SCHEDULE

NTS

GreenbergFarrow

19000 MacArthur Blvd., Suite 250  
Irvine, CA 92612  
t. 949 296 0450 f. 949 296 0437

COPYRIGHT NOTICE

This drawing is the property of the above referenced Professional and is not to be used for any purpose other than the specific project and site named herein, and cannot be reproduced in any manner without the express written permission from the Professional.

ISSUE/REVISION RECORD

DATE	DESCRIPTION
01/19/15	PERMIT SET

PROFESSIONAL SEAL

PROFESSIONAL IN CHARGE

GUIDO INOA ALVAREZ

PROJECT MANAGER

GUIDO INOA ALVAREZ

QUALITY CONTROL

GUIDO INOA ALVAREZ

DRAWN BY

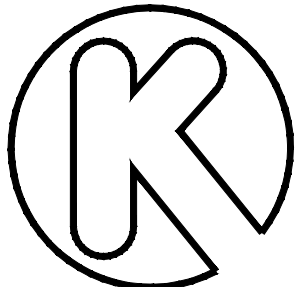
FREDDY LEE

PROJECT NAME

CIRCLE K  
STORES, INC.  
CAR WASH

COLORADO SPRINGS  
COLORADO

E. FOUNTAIN BLVD &  
ACADEMY PARK LOOP



CIRCLE K STORES INC.

PROJECT NUMBER

20130780

SHEET TITLE

ELECTRICAL  
PLAN

SHEET NUMBER

E2.0-CW