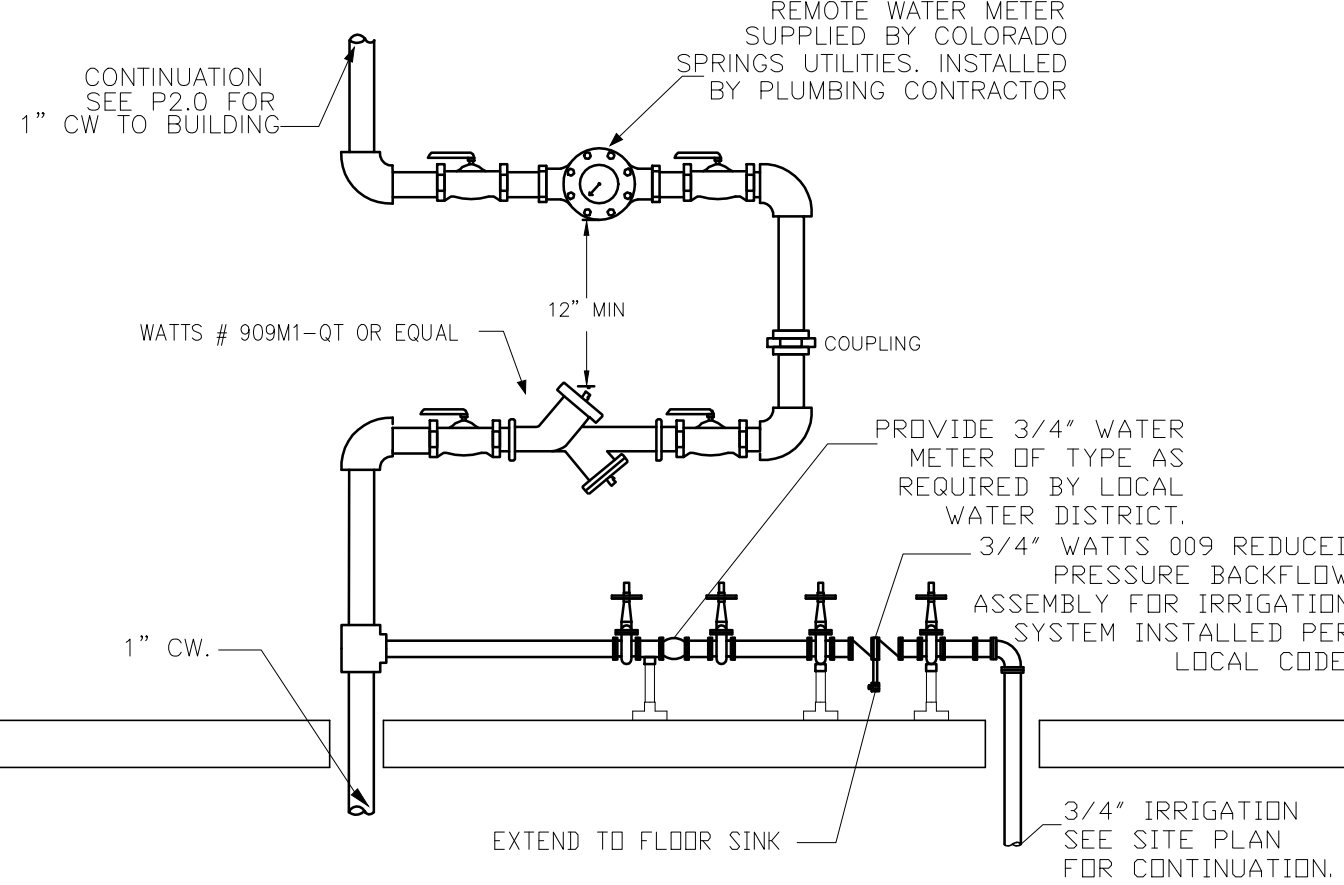


PLUMBING FIXTURE SCHEDULE

- | SYMBOL | FITURE | | | | | | DESCRIPTION |
|--------|--------------------|----|--------|------|----|----|---|
| | | W | V | CW | HW | T | |
| FD | FLOOR DRAIN | 2" | 1-1/2" | - | - | 2" | J.R. SMITH #2005Y-(A) W/TRAP PRIMER |
| TP | TRAP PRIMER | - | - | 1/2" | - | - | PRECISION PLUMBING PRODUCTS P-2 (PRESSURE ACTUATED) - LOCATE IN WALL MOUNTED ACCESSIBLE BOX W/ COVER @ 24"A.F.F. |
| BP1 | BACKFLOW PREVENTER | - | - | 2" | - | - | "WATTS" # 900M1-OT OR EQUAL REDUCED PRESSURE PRINCIPLE BACKFLOW PREVENTER WITH AIR GAP FITTING AND DRAIN LINE QUATER TURN BALL VALVES AND STRAINER |
| HB | HOSE BIBB | - | - | 3/4" | - | - | MIFAB #MRY-206-K (INTEGRAL WITH VACUUM BREAKER) ENCASED TYPE NON-FREEZE |
| DP | DRAIN PIT | 6" | - | - | - | - | 2' X 3' DRAIN PIT BASIN. PROVIDE WITH TYPE 15 VALVE GRATE. SEE P.3.0 A2 FOR DETAILS |
| OI | OIL INTERCEPTOR | 6" | - | - | - | - | JENSEN PRECAST 500 GALLON OIL INTERCEPTOR. SEE P.3.0 A4 FOR DETAILS. |
| R1 | RECLAIM TANK #1 | 6" | - | - | - | - | 1500 GALLON WATER RECLAIM TANK #1 SEE P.3.0 A1 FOR DETAILS |
| R2 | RECLAIM TANK #2 | 6" | - | - | - | - | 1500 GALLON WATER RECLAIM TANK #2 SEE P.3.0 A1 FOR DETAILS |
| R3 | RECLAIM TANK #2 | 6" | - | - | - | - | 1500 GALLON WATER RECLAIM TANK #3 SEE P.3.0 A1 FOR DETAILS |
| TD | TRENCH DRAIN | 4" | - | - | - | - | PRECAST TRENCH DRAIN, MIN. 1% SLOPE, PROVIDE WITH NEEHAW R-4990-CX TYPE A GRATE & FRAME OR EQUAL. SEE P.3.0 A3 FOR DETAILS |

NOTE: ONLY THOSE SYMBOLS SHOWN ON THE DRAWING APPLY



REFER TO M2.1-CS FOR GAS PIPE ROUTING IN CONVENIENCE STORE AND GAS RISER DIAGRAM.

P1.0-CW