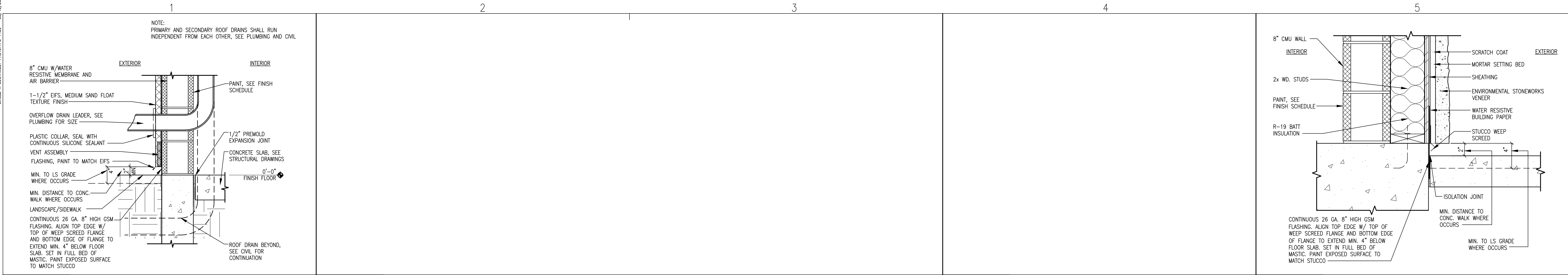


Drawing Name: P:\1015\20130780\000_Circle K Wash Construction Documents\Production\A2.0-CW.dwg User Modified: Jan 26, 2015 - 1:38pm Project Loc: Jan 26, 2015 - 1:38pm Title: ext. dwg 2015 - 1:38pm by gmds



D1

SCALE

1"=1'-0"

ROOF DRAIN & OVERFLOW DETAIL

D2

SCALE

N.T.S.

NOT USED

D4

SCALE

1 1/2"=1'-0"

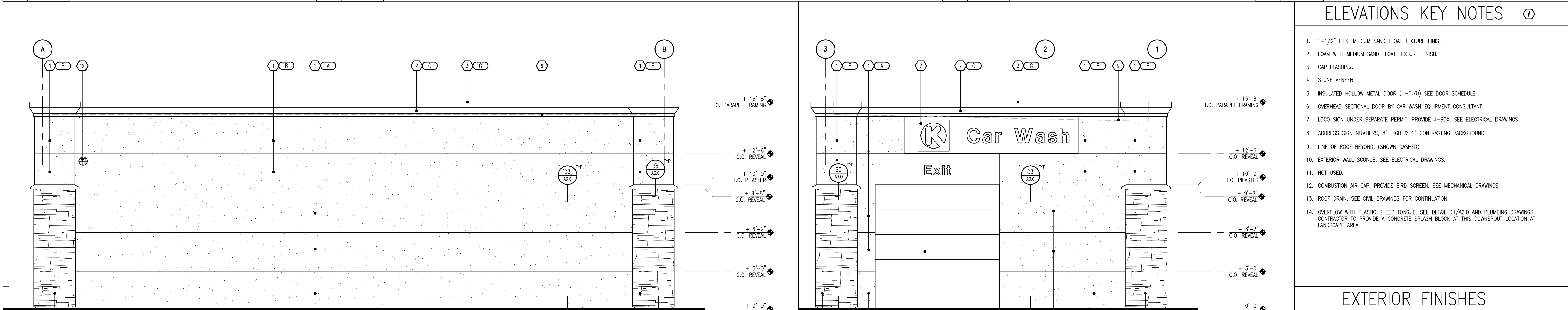
NOT USED

D5

SCALE

1 1/2"=1'-0"

STONE VENEER SILL DETAIL



B1

SCALE

1/4"=1'-0"

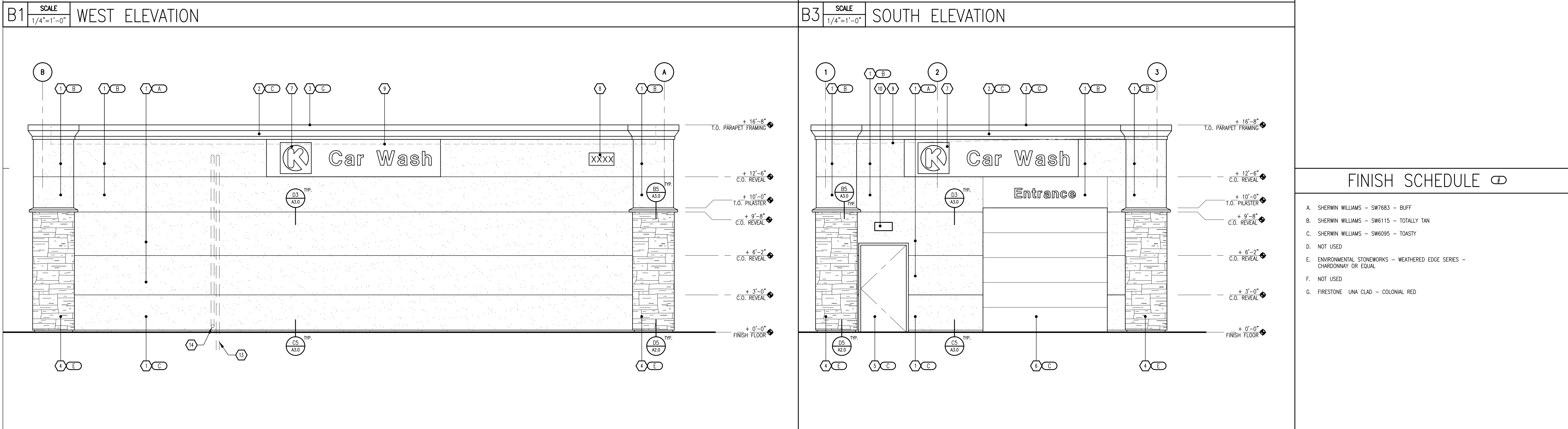
WEST ELEVATION

B3

SCALE

1/4"=1'-0"

SOUTH ELEVATION



A1

SCALE

1/4"=1'-0"

EAST ELEVATION

A3

SCALE

1/4"=1'-0"

NORTH ELEVATION

ELEVATIONS KEY NOTES

- 1-1/2" EIFS, MEDIUM SAND FLOAT TEXTURE FINISH.
- FOAM WITH MEDIUM SAND FLOAT TEXTURE FINISH.
- CAP FLASHING.
- STONE VENEER.
- INSULATED HOLLOW METAL DOOR (U=0.70) SEE DOOR SCHEDULE.
- OVERHEAD SECTIONAL DOOR BY CAR WASH EQUIPMENT CONSULTANT.
- LOGO SIGN UNDER SEPARATE PERMIT. PROVIDE J-BOX. SEE ELECTRICAL DRAWINGS.
- ADDRESS SIGN NUMBERS, 8" HIGH & 1" CONTRASTING BACKGROUND.
- LINE OF ROOF BEYOND. (SHOWN DASHED)
- EXTERIOR WALL SCONCE, SEE ELECTRICAL DRAWINGS.
- NOT USED.
- COMBUSTION AIR CAP, PROVIDE BIRD SCREEN. SEE MECHANICAL DRAWINGS.
- ROOF DRAIN, SEE CIVIL DRAWINGS FOR CONTINUATION.
- OVERFLOW WITH PLASTIC SHEEP TONGUE, SEE DETAIL D1/A2.0 AND PLUMBING DRAWINGS. CONTRACTOR TO PROVIDE A CONCRETE SPLASH BLOCK AT THIS DOWNSPOUT LOCATION AT LANDSCAPE AREA.

EXTERIOR FINISHES

- EIFS - SENERGY SENTURION I WALL SYSTEMS

FINISH SCHEDULE

- | | |
|----|--|
| A. | SHERWIN WILLIAMS - SW7683 - BUFF |
| B. | SHERWIN WILLIAMS - SW6115 - TOTALLY TAN |
| C. | SHERWIN WILLIAMS - SW6095 - TOASTY |
| D. | NOT USED |
| E. | ENVIRONMENTAL STONEWORKS - WEATHERED EDGE SERIES - CHARDONNAY OR EQUAL |
| F. | NOT USED |
| G. | FIRESTONE - UNA CLAD - COLONIAL RED |

FOR SHEET NUMBER REFERENCES NOTED ON THIS DRAWING, REFER TO SHEET NUMBER WITH SUFFIX '-CW'.

GreenbergFarrow
1430 W. Peachtree St., Suite 200
Atlanta, GA 30309
t: 404 601 4000 f: 404 601 3980

COPYRIGHT NOTICE
This drawing is the property of the above referenced Professional and is not to be used for any purpose other than the specific project and site named herein, and cannot be reproduced in any manner without the express written permission from the Professional.

ISSUE/REVISION RECORD
DATE DESCRIPTION
01/19/15 PERMIT SET

PROFESSIONAL SEAL

PROFESSIONAL IN CHARGE
HUGHES THOMPSON
PROJECT MANAGER
OSCAR FLORES
QUALITY CONTROL
WARREN DRURY
DRAWN BY
ARMANDO MATA

PROJECT NAME
CIRCLE K STORES, INC. CAR WASH
COLORADO SPRINGS COLORADO
E. FOUNTAIN BLVD & ACADEMY PARK LOOP

CIRCLE K STORES INC.

PROJECT NUMBER
20130780

SHEET TITLE
EXTERIOR ELEVATIONS

SHEET NUMBER
A2.0-CW