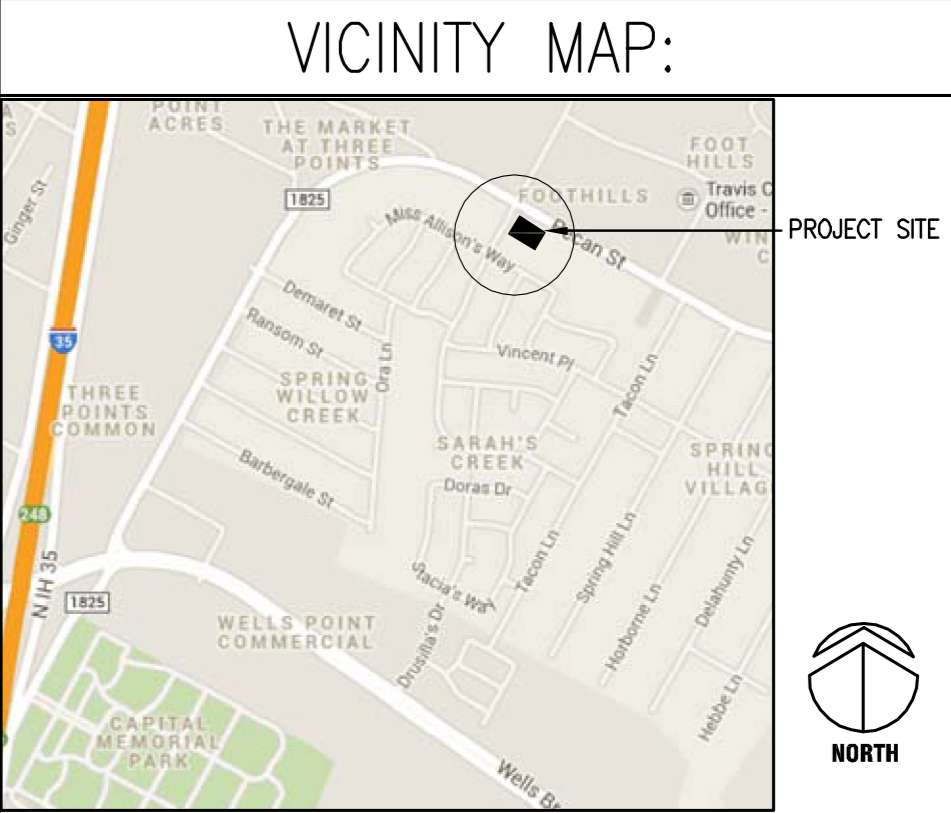
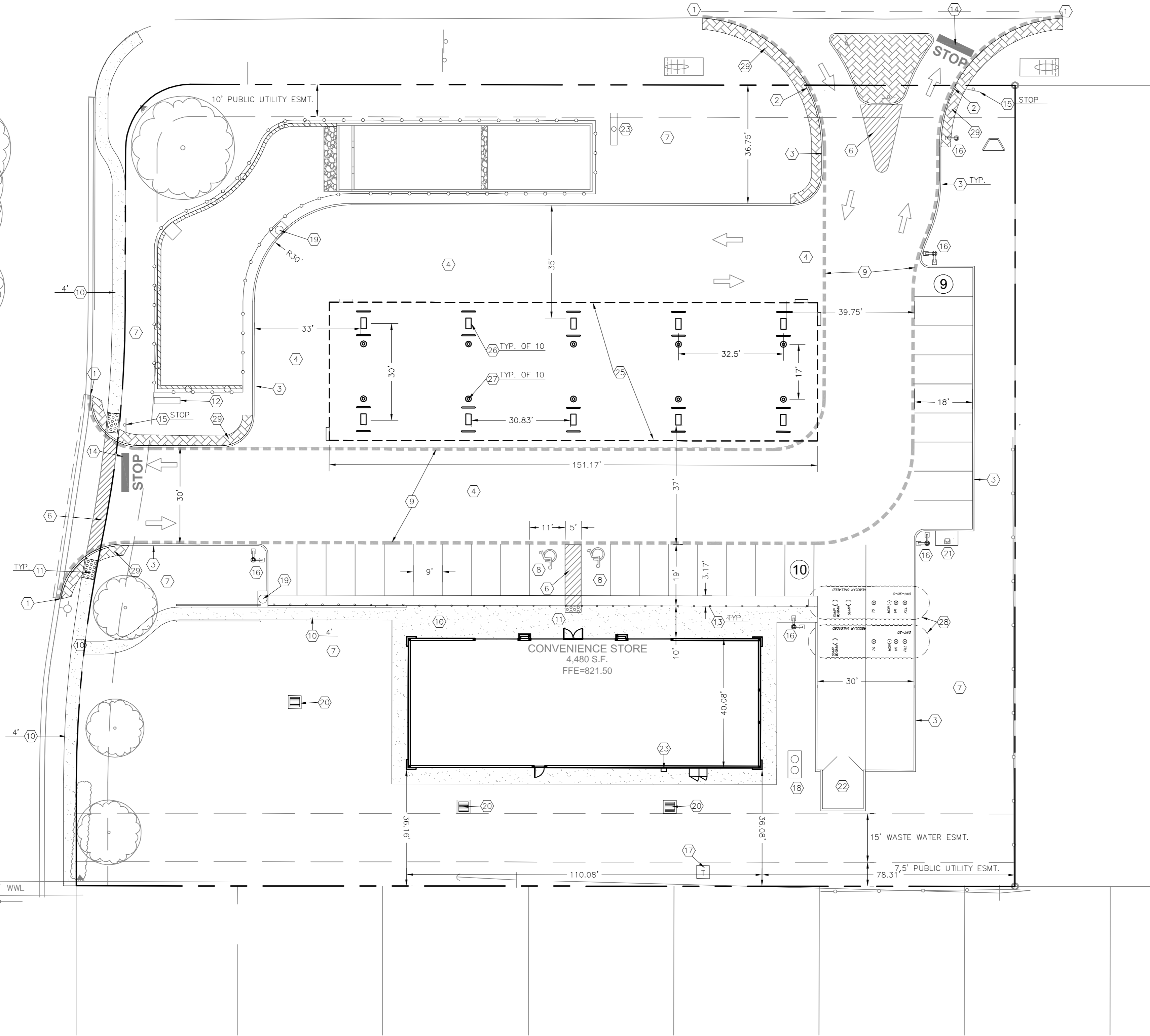


F.M. 1825  
(PECAN STREET WEST)  
(120' R.O.W.)  
(ASPHALT PAVEMENT)

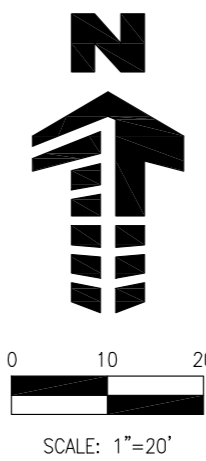
SARAH'S CREEK DRIVE  
(R.O.W. WIDTH VARIES)  
(ASPHALT PAVEMENT)  
(30 M.P.H.)



PROJECT DATA	
PROJECT ADDRESS:	LOT-1, BLOCK-B, SEC OF WEST PECAN STREET AND SARAH'S CREEK DRIVE, PFLUGERVILLE, TEXAS 78660
PROJECT NAME:	CIRCLE K CONVENIENCE STORE AND FUEL PUMPS
PROJECT DESCRIPTION:	PROPOSAL FOR A NEW CONVENIENCE STORE WITH ASSOCIATED FUEL SALES CONSISTING OF A 4,480 S.F. CONVENIENCE STORE AND A 6,500 S.F. FUEL CANOPY WITH 10 FUEL PUMPS. THE CONVENIENCE STORE WILL SELL BEER AND WINE FOR OFFSITE CONSUMPTION. THE FACILITY WILL OPERATE 24 HOURS.
PARCEL NUMBER:	LOT-1, BLOCK-B
PARCEL/SITE AREA:	± 1.603 ACRES (69,841 S.F.)
GROSS BUILDING AREA:	C-STORE AREA: 4,480 S.F.
GROSS FUEL CANOPY:	6,500 S.F.

GENERAL SITE NOTES	
A.	SIGNS TO BE APPROVED BY SEPARATE PERMIT.
B.	DUMPSTERS AND MECHANICAL EQUIPMENT WILL BE SCREENED FROM THE PUBLIC.
C.	WALLS OVER 6' HIGH TO BE APPROVED BY SEPARATE PERMIT.
D.	PARKING WILL BE PAVED.
E.	PARKING WILL BE WITHIN 600' OF BUILDING.

KEYED NOTES	
1.	NEW CURB TO MATCH EXISTING
2.	TRANSITION CURB
3.	CONCRETE CURB AND GUTTER
4.	CONCRETE PAVING
5.	HEAVY DUTY CONCRETE PAVING
6.	4" WIDE PAINTED STRIPING @ 2'-0" O.C. AND 45°
7.	LANDSCAPE AREA - SEE LANDSCAPE PLANS
8.	ACCESSIBLE PARKING SPACE
9.	FIRE LANE
10.	CONCRETE SIDEWALK
11.	BARRIER-FREE RAMP
12.	MONUMENT SIGN
13.	CONCRETE BOLLARD - TYP. OF 34 (C.C. TO VERIFY QUANTITY), 5'-0" O.C. MAX.
14.	PAINTED STOP BAR
15.	INTERNAL TRAFFIC SIGN (STOP SIGN)
16.	SITE LIGHT POLE - SEE DETAIL-6/SD1.3
17.	PROPOSED TRANSFORMER PAD
18.	PROPOSED GREASE INTERCEPTOR
19.	CURB INLET
20.	GRATE INLET
21.	AIR/WATER PAD WITH TRASH CAN AND TWO 6" BOLLARDS
22.	DUMPSTER ENCLOSURE - SEE DETAIL-1/SD1.3 TO 4/SD1.3
23.	SITE SIGN POLE
24.	ELECTRICAL CABINET - SEE ELECTRICAL PLANS
25.	PROPOSED FUEL CANOPY
26.	MULTI-PRODUCT FUEL DISPENSER
27.	CANOPY COLUMNS
28.	PROPOSED UNDERGROUND FUEL STORAGE TANKS - SEE FUELING PLANS
29.	RADIUS PROTECTION



SCALE: 1"=20'

