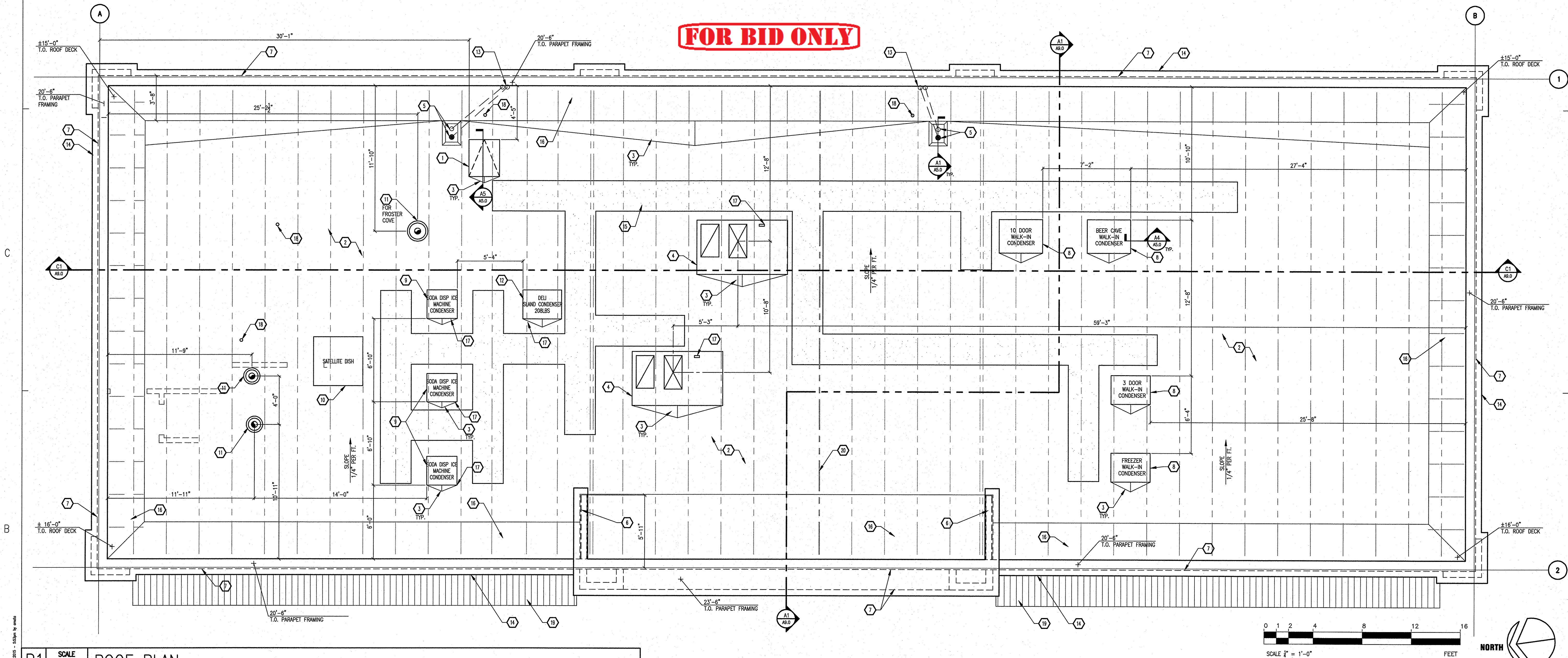


1															2															3															4															5																																																																																									
ROOF PLAN KEY NOTES																																																																											ROOF PLAN GENERAL NOTES																																																																										
1. ROOF HATCH WITH INSULATED SELF- FLASHING CURB. PROVIDE (2)TWO SAFETY EXTENSION POSTS. COORDINATE ROUGH OPENING WITH MODEL SPECIFIED AND STRUCTURAL FRAMED OPENING – SEE DETAIL A5/A5.0. SEE DETAIL A1/A12.0 FOR ROOF LADDER.															8. WALK-IN COOLER AND FREEZER CONDENSING UNIT. VERIFY SIZE, MODEL WITH WALK-IN COOLER AND FREEZER MFR. RECOMMENDATIONS. COOLER CONDENSER MUST BE MOUNTED ON 8" MIN. HT WOOD FRAMED AND PRESSURE TREATED PLYWOOD PLATFORM ATTACHED TO FLANGE OF MECHANICAL EQUIPMENT. SEE MECHANICAL DRAWINGS AND DETAIL A4/A5.0.															16. PARAPET BRACING. SEE STRUCTURAL DRAWINGS.															1. GC TO PROVIDE "HAIL GUARDS" TO PROTECT FINIS FOR ALL MECHANICAL HVAC AND REFRIGERATION EQUIPMENT ORDERED BY GC. HILL PHOENIX WILL PROVIDE FINIS ON THEIR OWN PROVIDED EQUIPMENT AND WILL NOT BE THE RESPONSIBILITY UNDER THE GC'S BID.															8. ROOF DRAIN AND OVERFLOW DRAIN BASED ON 6" PER HOUR RAIN FALL CRITERIA.																																																																																									
2. "FIRESTONE" MECHANICALLY FASTENED WHITE 80-MIL TPO SINGLE PLY MEMBRANE ROOFING SYSTEM OVER PLYWOOD DECK. WALKWAYS AS REQUIRED BY ROOFING MANUFACTURER. ROOF SYSTEM TO BE FLOOD TESTED AFTER INSTALLATION TO ENSURE NO LEAKS. SEE SHEET A13.0 FOR ROOF SPECIFICATION.															9. ICE MACHINE CONDENSING UNIT. VERIFY SIZE, MODEL WITH ICE CUBBER MFR. RECOMMENDATIONS. SEE MECHANICAL DRAWINGS AND DETAIL A4/A5.0.															17. CONDUIT SEE MECHANICAL AND ELECTRICAL DRAWINGS.															2. SITE VERIFY ALL EQUIPMENT LOCATIONS PRIOR TO INSTALLATION OF EQUIPMENT RAILS. COORDINATE PLACEMENT WITH ROOF FRAMING PLAN.															9. FLASH ROOFING MEMBRANE PENETRATIONS USING PREFABRICATED BOOTS, FITTED COVERINGS, AND OTHER ACCESSORIES AS PROVIDED BY ROOFING SYSTEM MANUFACTURER. USE COMPATIBLE SEALANTS WITH MANUFACTURERS MATERIALS.																																																																																									
3. FRAMED DRAINAGE CRICKET AT WALLS, BEVEL EDGE, ETC., MINIMUM SLOPE 1/4" PER. FOOT. SEE DETAIL D2/A12.0.															10. SATELLITE DISH. SEE STRUCTURAL AND ELECTRICAL DRAWINGS. COORD. LOCATION WITH CIRCLE K PM AND TRUSS MFR.															18. VTR LOCATION, SEE PLUMBING DRAWINGS.															3. REFRIGERATION EQUIPMENT RAILS SHALL BE PROVIDED AND INSTALLED BY THE GENERAL CONTRACTOR.															10. VERIFY MECHANICAL UNIT WEIGHTS WITH SITE SPECIFIC MECHANICAL UNIT SPECS.																																																																																									
4. ROOF TOP HVAC UNIT. CURBS FOR RTU'S TO BE PROVIDED BY MECHANICAL CONTRACTOR. SEE MECHANICAL AND STRUCTURAL DRAWINGS.															11. EXHAUST FAN UNITS, SEE MECHANICAL DRAWINGS.															19. METAL AWNING, SEE WALL SECTION A2/A10.0															4. PRE-FABRICATED PIPE PORTALS AND OPENINGS FOR SAME SHALL BE PROVIDED AND INSTALLED BY GENERAL CONTRACTOR.															11. COOLER CONDENSER MUST BE MOUNTED ON 4" MIN. HT. WOOD FRAMED AND PRESSURE TREATED PLYWOOD PLATFORM ATTACHED TO FLANGE OF MECHANICAL EQUIPMENT.																																																																																									
5. COMBINATION ROOF DRAIN/EMERGENCY OVERFLOW DRAIN. PROVIDE HEAT TAPE TO ROOF AND EMERGENCY OVERFLOW DRAIN. ROOF DRAIN TO BE TIED TO UNDERGROUND STORM DRAIN, SEE CIVIL FOR CONTINUATION. SEE DETAIL A1/A5.0.															12. DELI ISLAND CONDENSING UNIT. SEE MECHANICAL DRAWINGS AND DETAIL A4/A5.0.															20. DRAFT STOP, SEE DETAIL B2/A12.0															5. ROOFING INSTALLERS SHALL BE APPROVED BY THE MANUFACTURER WITH A MINIMUM OF THREE YEARS EXPERIENCE IN INSTALLING THE SPECIFIED SYSTEM.															12. G.C. TO PAINT THE EXPOSED BACK OF PARAPET ABOVE ROOF LINE.																																																																																									
6. WALL ABOVE ROOF FOR PARAPET RETURN.															13. EMERGENCY OVERFLOW ROOF DRAIN TAIL PIECE, SEE DETAIL A3/A5.0.																														6. ROOFING CONTRACTOR TO PROVIDE WRITTEN WARRANTY, SIGNED BY MANUFACTURER OF PRIMARY ROOFING MATERIALS AND HIS AUTHORIZED INSTALLER, AGREEING TO REPLACE, REPAIR DEFECTIVE MATERIALS AND WORKMANSHIP WITHIN WARRANTY PERIOD.															13. PROVIDE ELECTRICAL PENETRATION IN ROOF FOR AIMERS.																																																																																									
7. LINE OF WALL BELOW.															14. PARAPET CORNICE, SEE EXTERIOR ELEVATIONS AND DETAIL D2/A12.1.																														7. WARRANTY PERIOD IS 20 YEARS FROM DATE OF SUBSTANTIAL COMPLETION AND SHALL BE A NO DOLLAR LIMIT WARRANTY.															14. PROVIDE SNOW BREAK "SNOBLOX DUCEC" FOR COLD WEATHER TOWER AND EAVES.																																																																																									
															15. 30" WIDE WALKING PATH FOR EQUIPMENT ACCESS. "FIRESTONE" WALKWAY PAD OR EQUAL. INSTALL PER MANUFACTURER INSTRUCTIONS. VERIFY PATH LOCATION WITH CIRCLE K PROJECT MANAGER.																																																																																																																																						

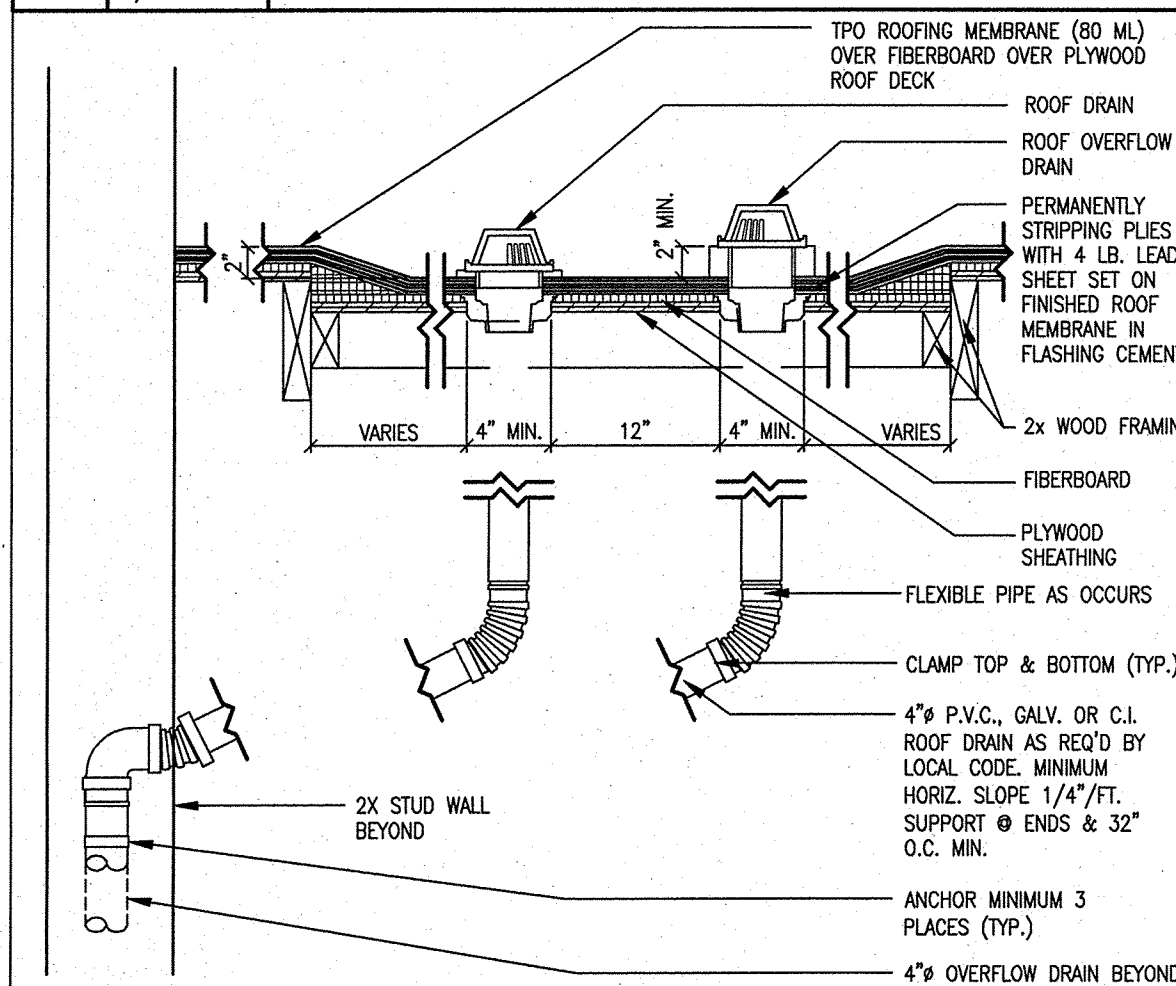
## ROOF PLAN GENERAL NOTES

- GC TO PROVIDE "HAIL GUARDS" TO PROTECT FINS FOR ALL MECHANICAL HVAC AND REFRIGERATION EQUIPMENT ORDERED BY GC. HILL PHOENIX WILL PROVIDE FINS ON THEIR OWN PROVIDED EQUIPMENT AND WILL NOT BE THE RESPONSIBILITY UNDER THE GC'S BID.
- SITE VERIFY ALL EQUIPMENT LOCATIONS PRIOR TO INSTALLATION OF EQUIPMENT RAILS. COORDINATE PLACEMENT WITH ROOF FRAMING PLAN.
- REFRIGERATION EQUIPMENT RAILS SHALL BE PROVIDED AND INSTALLED BY THE GENERAL CONTRACTOR.
- PRE-FABRICATED PIPE PORTALS AND OPENINGS FOR SAME SHALL BE PROVIDED AND INSTALLED BY GENERAL CONTRACTOR.
- ROOFING INSTALLERS SHALL BE APPROVED BY THE MANUFACTURER WITH A MINIMUM OF THREE YEARS EXPERIENCE IN INSTALLING THE SPECIFIED SYSTEM.
- ROOFING CONTRACTOR TO PROVIDE WRITTEN WARRANTY, SIGNED BY MANUFACTURER OF PRIMARY ROOFING MATERIALS AND HIS AUTHORIZED INSTALLER, AGREEING TO REPLACE, REPAIR DEFECTIVE MATERIALS AND WORKMANSHIP WITHIN WARRANTY PERIOD.
- WARRANTY PERIOD IS 20 YEARS FROM DATE OF SUBSTANTIAL COMPLETION AND SHALL BE A NO DOLLAR LIMIT WARRANTY.
- ROOF DRAIN AND OVERFLOW DRAIN BASED ON 6" PER HOUR RAIN FALL CRITERIA.
- FLASH ROOFING MEMBRANE PENETRATIONS USING PREFABRICATED BOOTS, FITTED COVERINGS, AND OTHER ACCESSORIES AS PROVIDED BY ROOFING SYSTEM MANUFACTURER. USE COMPATIBLE SEALANTS WITH MANUFACTURERS MATERIALS.
- VERIFY MECHANICAL UNIT WEIGHTS WITH SITE SPECIFIC MECHANICAL UNIT SPECS.
- COOLER CONDENSER MUST BE MOUNTED ON 4" MIN. HT. WOOD FRAMED AND PRESSURE TREATED PLYWOOD PLATFORM ATTACHED TO FLANGE OF MECHANICAL EQUIPMENT.
- G.C. TO PAINT THE EXPOSED BACK OF PARAPET ABOVE ROOF LINE.
- PROVIDE ELECTRICAL PENETRATION IN ROOF FOR AMERS.
- PROVIDE SNOW BREAK "SNOBLOX DUECE" FOR COLD WEATHER TOWER AND EAVES.

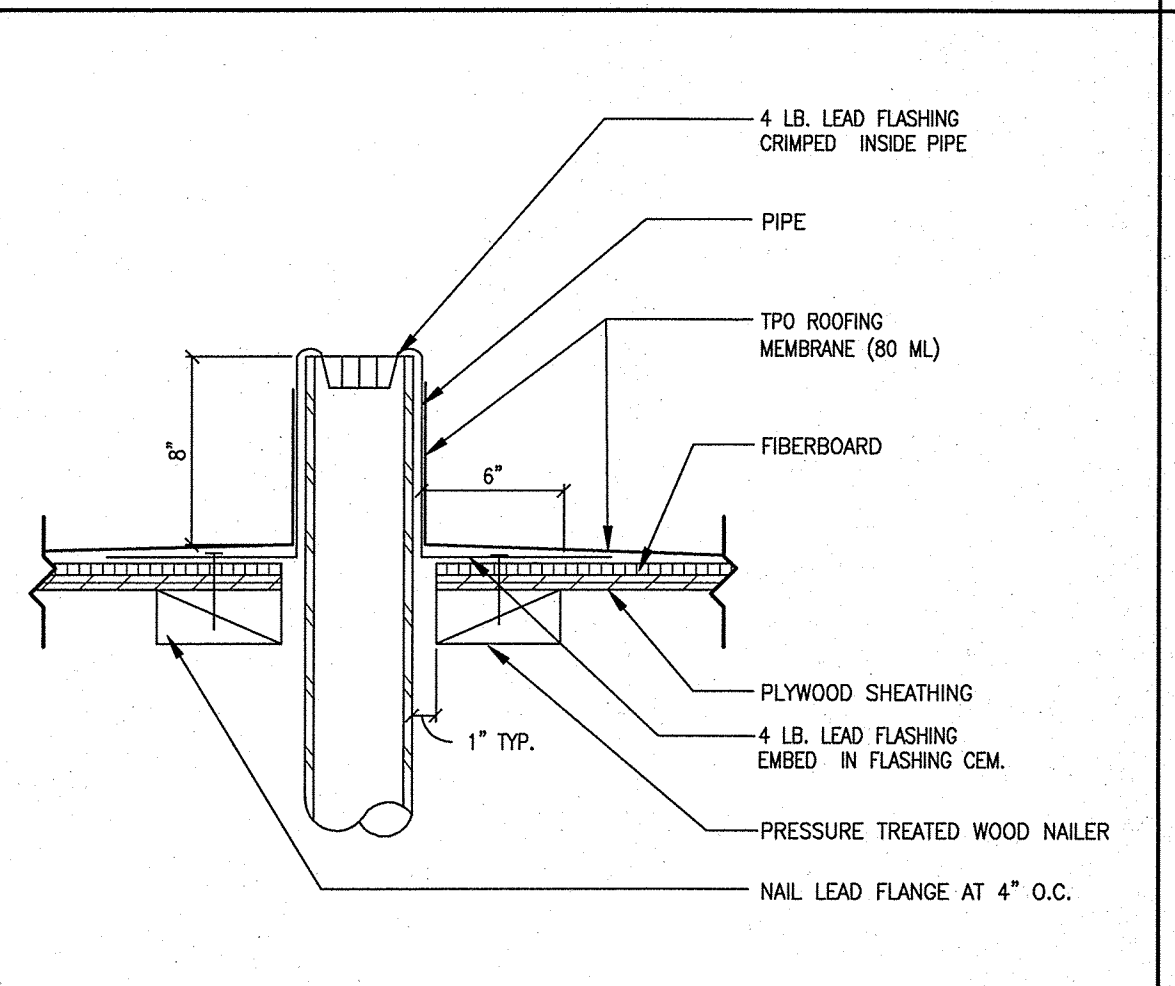
**FOR BID ONLY**



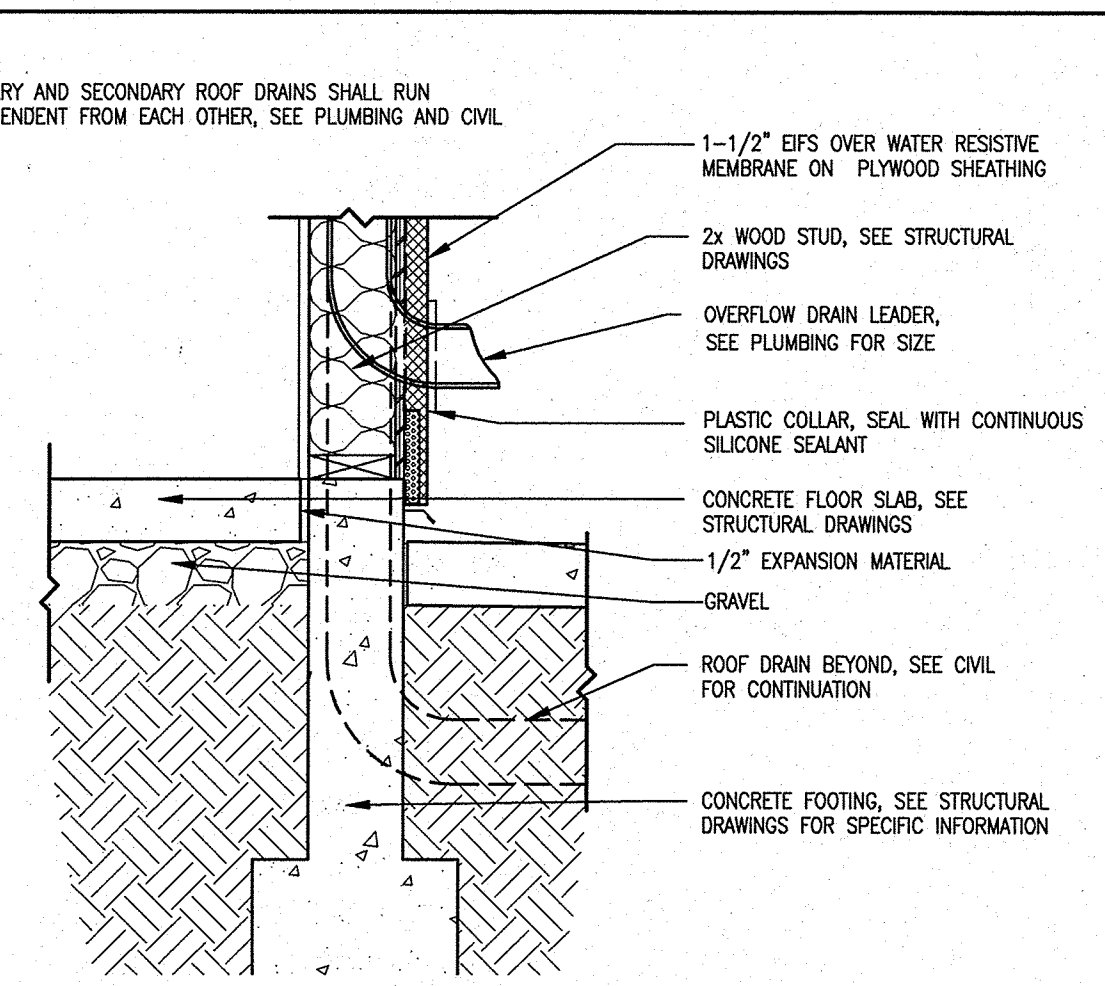
**B1** SCALE 1/4"=1'-0" **ROOF PLAN**



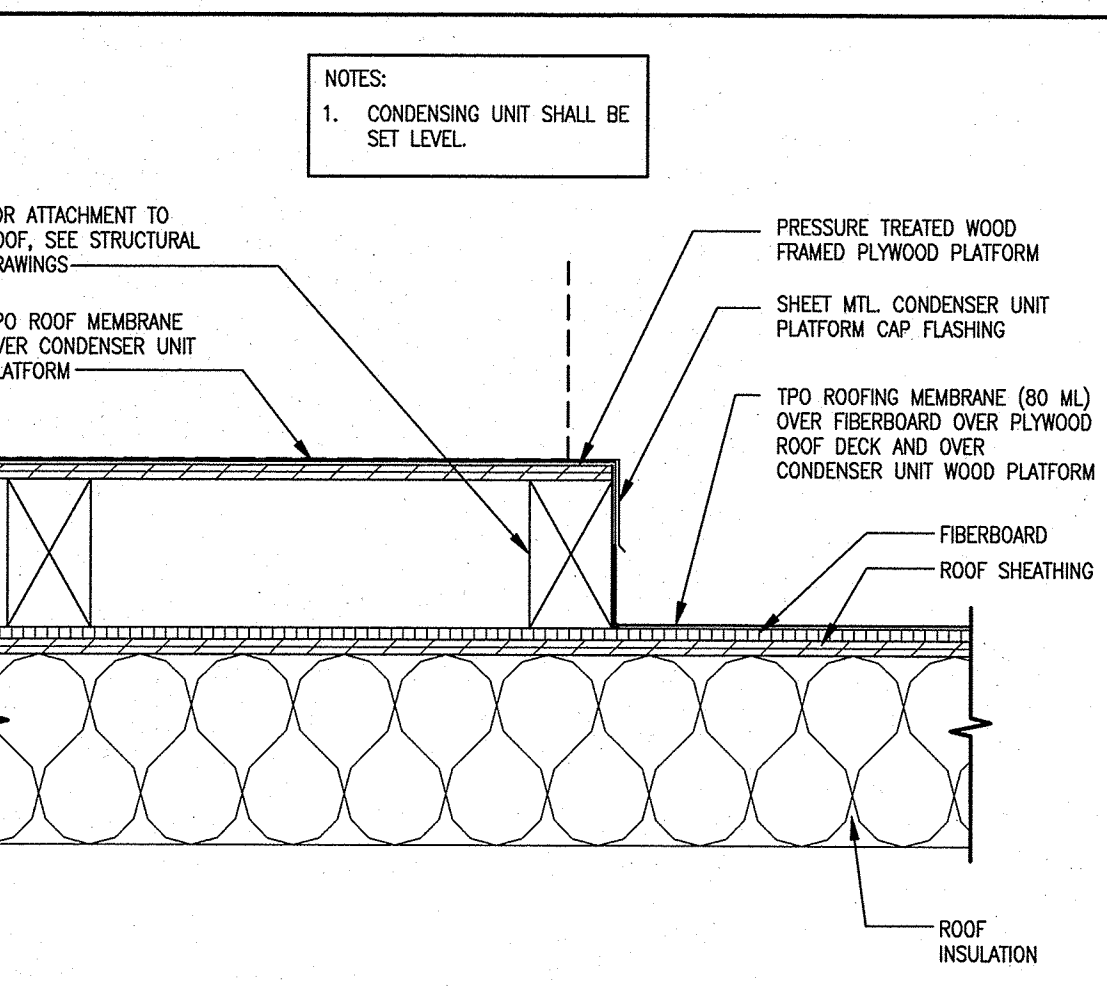
**A1** SCALE 1"=1'-0" **ROOF AND OVERFLOW DRAIN**



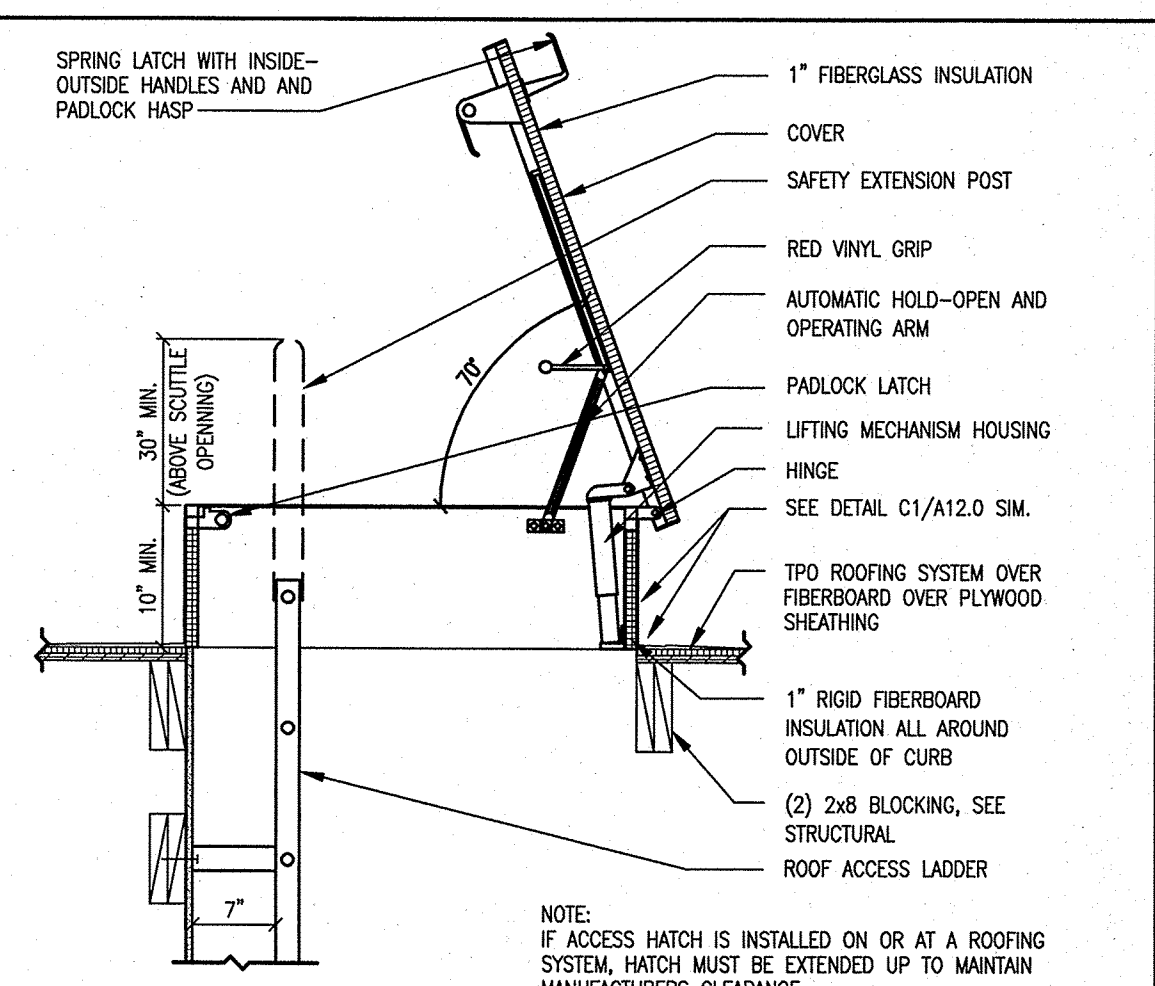
**A2** SCALE 1/2"=1'-0" **SMALL PIPE PENETRATION**



**A3** SCALE 1"=1'-0" **ROOF DRAIN LEADER**



**A4** SCALE 1/2"=1'-0" **CONDENSER PLATFORM DETAIL**



**A5** SCALE 3/4"=1'-0" **ROOF SCUTTLE**

**GreenbergFarrow**

1430 W. Peachtree St., Suite 200  
Atlanta, GA 30309  
t: 404 601 4000 f: 404 601 3980

**COPYRIGHT NOTICE**  
This drawing is the property of the above referenced Professional and is not to be used for any purpose other than the specific project and site named herein, and cannot be reproduced in any manner without the express written permission from the Professional

**ISSUE/REVISION RECORD**  
DATE DESCRIPTION  
02/13/15 PERMIT SET

**PROFESSIONAL SEAL**  
STATE OF NEW MEXICO  
HUGHES W. THOMPSON  
NO. 17650  
REGISTERED ARCHITECT  
FEB 16 2015

**PROFESSIONAL IN CHARGE**  
HUGHES THOMPSON  
**PROJECT MANAGER**  
OSCAR MORENO  
**QUALITY CONTROL**  
WARREN DRURY  
**DRAWN BY**  
ARMANDO MATA

**PROJECT NAME**  
**CIRCLE K STORES, INC.**

**ALBUQUERQUE NEW MEXICO**

4400 COORS BLVD. SW  
ALBUQUERQUE, NM 87121

**CIRCLE K STORES INC.**

**PROJECT NUMBER**  
20130791

**SHEET TITLE**  
**ROOF PLAN DETAILS - WITH BEER CAVE**

**SHEET NUMBER**  
**A5.0**