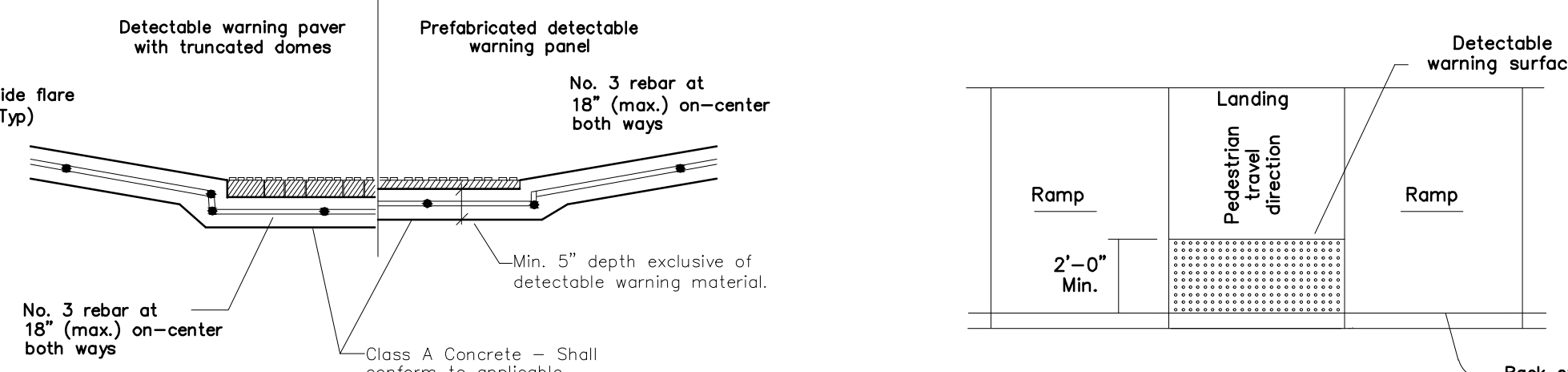
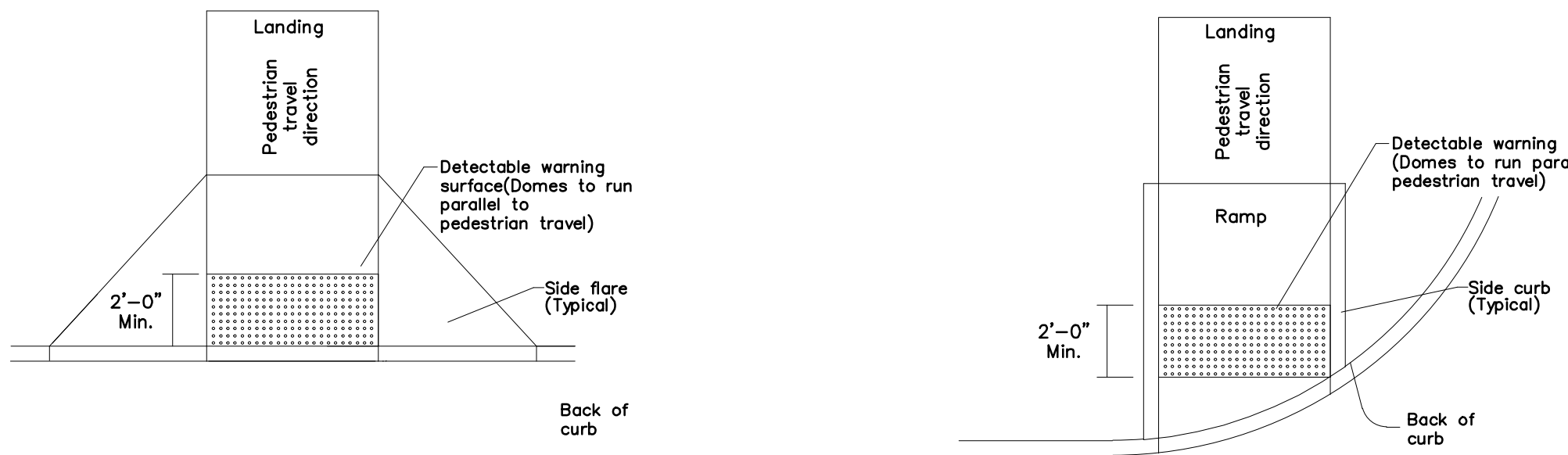


(Sidewalk set back from curb)

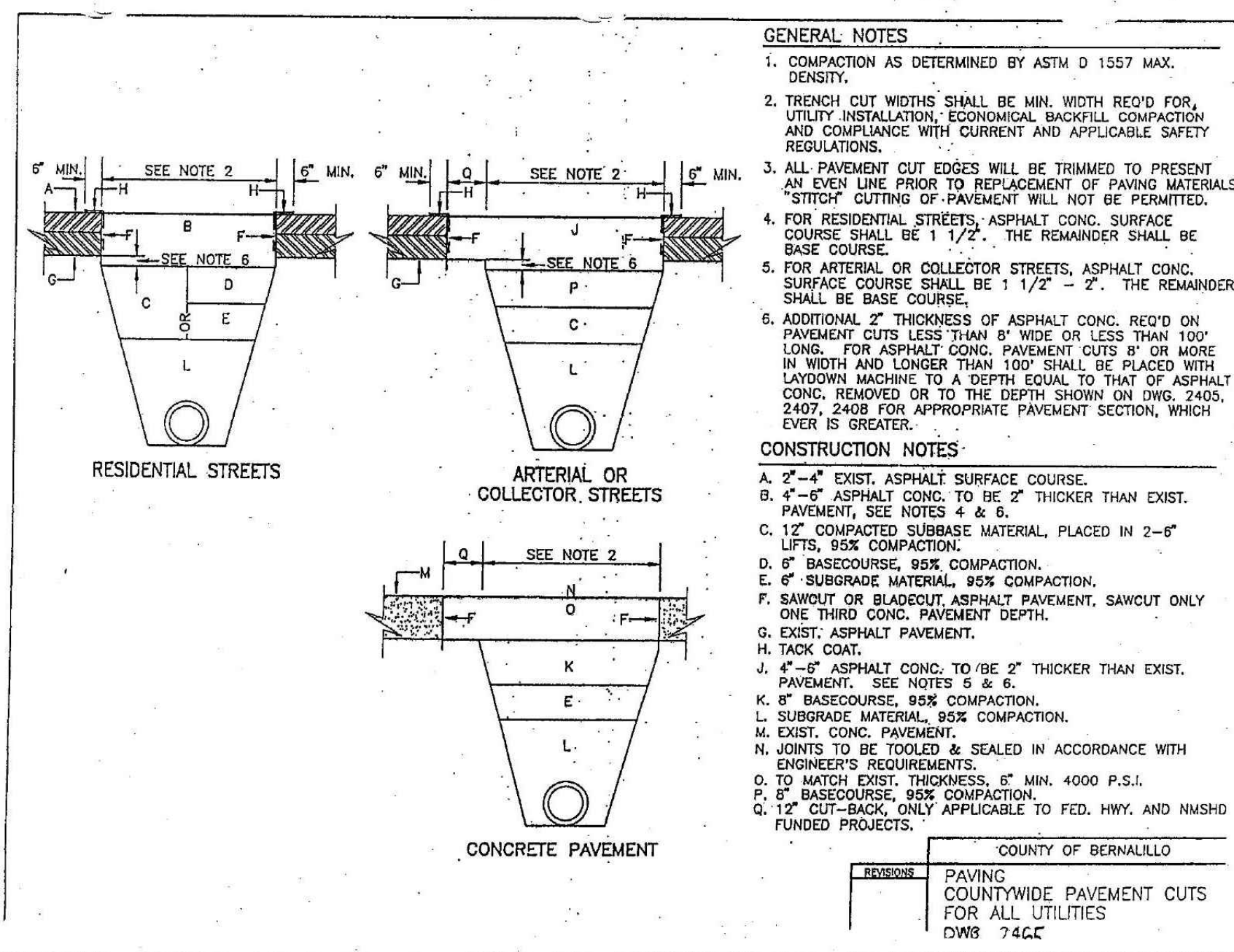
(Sidewalk adjacent to curb)

DIRECTIONAL RAMPS WITHIN RADIUS



SECTION: CURB RAMP AT DETECTABLE WARNING

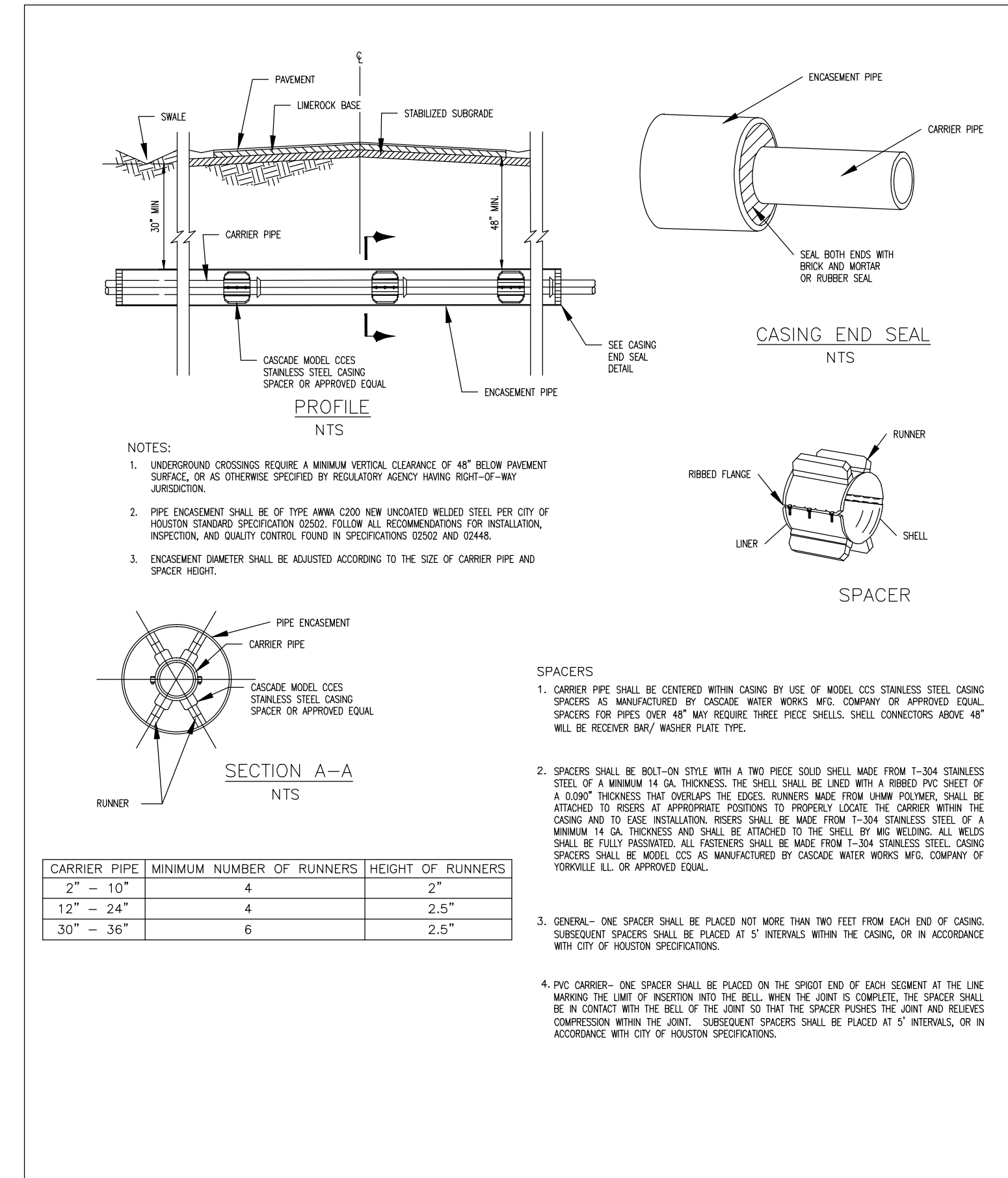
ALL SIDEWALK FEATURES SHALL COMPLY WITH PROWAG



GENERAL NOTES

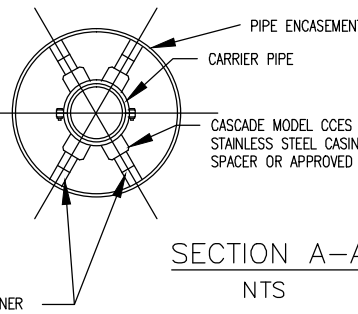
1. COMPACTION AS DETERMINED BY ASTM D 1557 MAX. DENSITY.
2. TRENCH CUT WIDTHS SHALL BE MIN. WIDTH REQ'D FOR UTILITY INSTALLATION, ECONOMICAL BACKFILL, COMPACTION AND COMPLIANCE WITH CURRENT AND APPLICABLE SAFETY REGULATIONS.
3. ALL PAVEMENT CUT EDGES WILL BE TRIMMED TO PRESENT AN EXIST LINE PRIOR TO REPLACEMENT OF PAVING MATERIALS. "STITCH" CUTTING OF PAVEMENT WILL NOT BE PERMITTED.
4. FOR RESIDENTIAL STREETS, ASPHALT CONC. SURFACE COURSE SHALL BE 1 1/2". THE REMAINDER SHALL BE BASE COURSE.
5. FOR ARTERIAL OR COLLECTOR STREETS, ASPHALT CONC. SURFACE COURSE SHALL BE 1 1/2" - 2". THE REMAINDER SHALL BE BASE COURSE.
6. ADDITIONAL 2" THICKNESS OF ASPHALT CONC. REQ'D ON PAVEMENT CUTS LESS THAN 8' WIDE OR LESS THAN 100' LONG. FOR ASPHALT CONC. PAVEMENT CUTS 8' OR MORE IN WIDTH AND LONGER THAN 100' SHALL BE PLACED WITH LAYDOWN MACHINE TO A DEPTH EQUAL TO THAT OF ASPHALT CONC. REMOVED OR TO THE DEPTH SHOWN ON DWG. 2405, 2407, 2408 FOR APPROPRIATE PAVEMENT SECTION, WHICH EVER IS GREATER.

CARRIER PIPE	MINIMUM NUMBER OF RUNNERS	HEIGHT OF RUNNERS
2" - 10"	4	2"
12" - 24"	4	2.5"
30" - 36"	6	2.5"



NOTES:

1. UNDERGROUND CROSSINGS REQUIRE A MINIMUM VERTICAL CLEARANCE OF 48" BELOW PAVEMENT SURFACE, OR AS DIFFERENCE SPECIFIED BY REGULATORY AGENCY HAVING RIGHT-OF-WAY JURISDICTION.
2. PIPE ENCLOSURE SHALL BE OF TYPE AWWA C200 NEW UNCOATED WELDED STEEL PER CITY OF HOUSTON ENDORSED SPECIFICATION 02022 FOLLOW ALL RECOMMENDATIONS FOR INSULATION, INSPECTION, AND QUALITY CONTROL FOUND IN SPECIFICATIONS 02022 AND 02448.
3. ENCLOSURE DIAMETER SHALL BE ADJUSTED ACCORDING TO THE SIZE OF CARRIER PIPE AND SPACER HEIGHT.

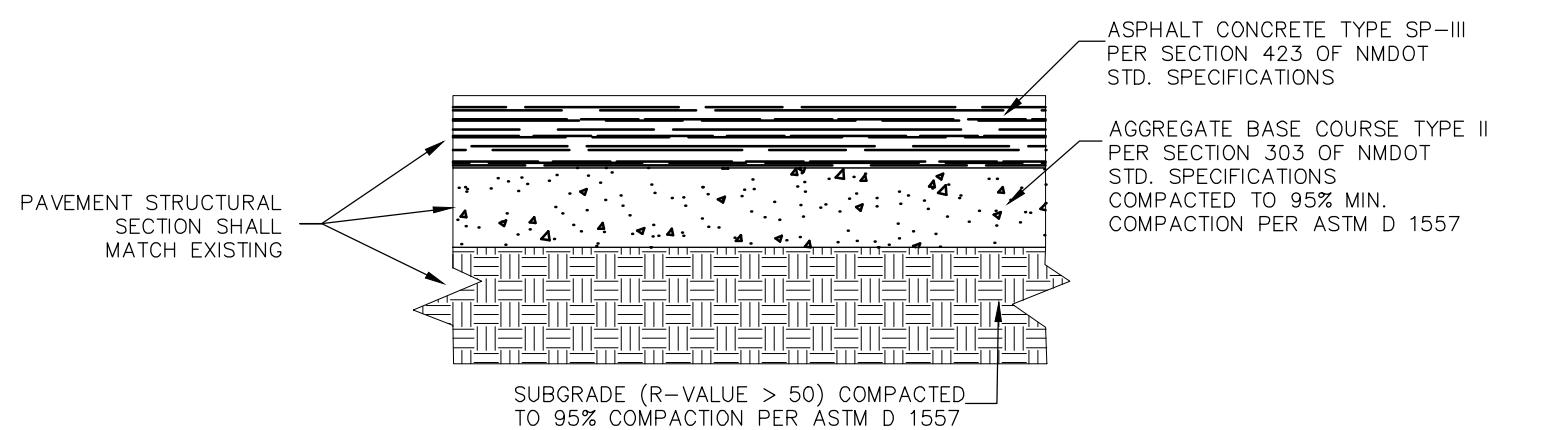


SECTION A-A

N.T.S.

SPACERS

1. CARRIER PIPE SHALL BE CENTERED WITHIN CASING BY USE OF MODEL C200 STAINLESS STEEL CASING SPACERS AS MANUFACTURED BY CASCADE WATER WORKS MFG. COMPANY OR APPROVED EQUAL. SPACERS FOR PRESS SHAFT 48" MAY REQUIRE THREE PIECE SHELLS. SHELL CONNECTORS ABOVE 48" WILL BE RECEIVER BAY/ WADDER PLATE TYPE.
2. SPACERS SHALL BE BOLT-ON STYLE WITH A TWO PIECE SOLID SHELL MADE FROM 1-304 STAINLESS STEEL OF A MINIMUM 1/4" THICKNESS. THE SHELL SHALL BE LINED WITH A RUBBER PVC SHEET OF A 1/8" THICKNESS THAT OVERLAPS THE EDGES. RUNNERS MADE FROM UHMW POLYMER SHALL BE ATTACHED TO RESSES AT APPROPRIATE POSITIONS TO PROPERLY LOCATE THE CARRIER WITHIN THE CASING AND TO EASE INSTALLATION. RESSES SHALL BE MADE FROM 1-304 STAINLESS STEEL OF A MINIMUM 1/4" THICKNESS AND SHALL BE ATTACHED TO THE SHELL BY WELDING. ALL WELDS SHALL BE FULLY PENETRATED. ALL FASTENERS SHALL BE MADE FROM 1-304 STAINLESS STEEL. CASING SPACERS SHALL BE MODEL C200 AS MANUFACTURED BY CASCADE WATER WORKS MFG. COMPANY OF FORTVILLE IL OR APPROVED EQUAL.
3. GENERAL- ONE SPACER SHALL BE PLACED NOT MORE THAN TWO FEET FROM EACH END OF CASING. SUBSEQUENT SPACERS SHALL BE PLACED AT 5' INTERVALS WITHIN THE CASING, OR IN ACCORDANCE WITH CITY OF HOUSTON SPECIFICATIONS.
4. PVC CARRIER- ONE SPACER SHALL BE PLACED ON THE SPIRIT END OF EACH SEGMENT AT THE LINE MARKING THE LIMIT OF INSERTION INTO THE WELL. WHEN THE JOINT IS COMPLETE, THE SPACER SHALL BE IN CONTACT WITH THE BELL OF THE JOINT SO THAT THE SPACER PUSHES THE JOINT AND RELIEVES COMPRESSION WITHIN THE JOINT. SUBSEQUENT SPACERS SHALL BE PLACED AT 5' INTERVALS, OR IN ACCORDANCE WITH CITY OF HOUSTON SPECIFICATIONS.



THE ASPHALT BINDER SHALL BE PG-76-22 PER NMDOT STD SPECIFICATIONS THE PATCH SHALL BE IN COMPLIANCE WITH MINOR PAVING - 2014 NMDOT STANDARD SPECIFICATIONS

ASPHALT PAVEMENT (COORS BLVD.)

N.T.S.

FOR BID ONLY

GreenbergFarrow

CO.#:

5500 Democracy Dr. Suite 125
Plano, TX 75024
t: 972 514 7641

PROJECT TEAM

COPYRIGHT NOTICE

This drawing is the property of the above referenced Professional and is not to be used for any purpose other than the specific project and site named herein, and cannot be reproduced in any manner without the express written permission from the Professional

ISSUE/REVISION RECORD

DATE DESCRIPTION
11-13-14 BERN. COUNTY 1ST SUBMITTAL
12-15-14 BERN. COUNTY 2ND SUBMITTAL



PROFESSIONAL IN CHARGE
FARMAN SHIR, PE
PROFESSIONAL ENGINEER
LICENSE NO. 21307

PROJECT MANAGER
MARLEY PHILLIPS

QUALITY CONTROL
KIEW KAM, PE

DRAWN BY
KIEW KAM, PE

PROJECT NAME
CIRCLE K

BERNALILLO COUNTY
NEW MEXICO
4400 COORS BLVD. SW
ALBUQUERQUE, NM 87121



PROJECT NUMBER
20130791

SHEET TITLE
DETAIL SHEET

SHEET NUMBER
C-7.1

